



## Tolworth Road, KT6

### £575,000

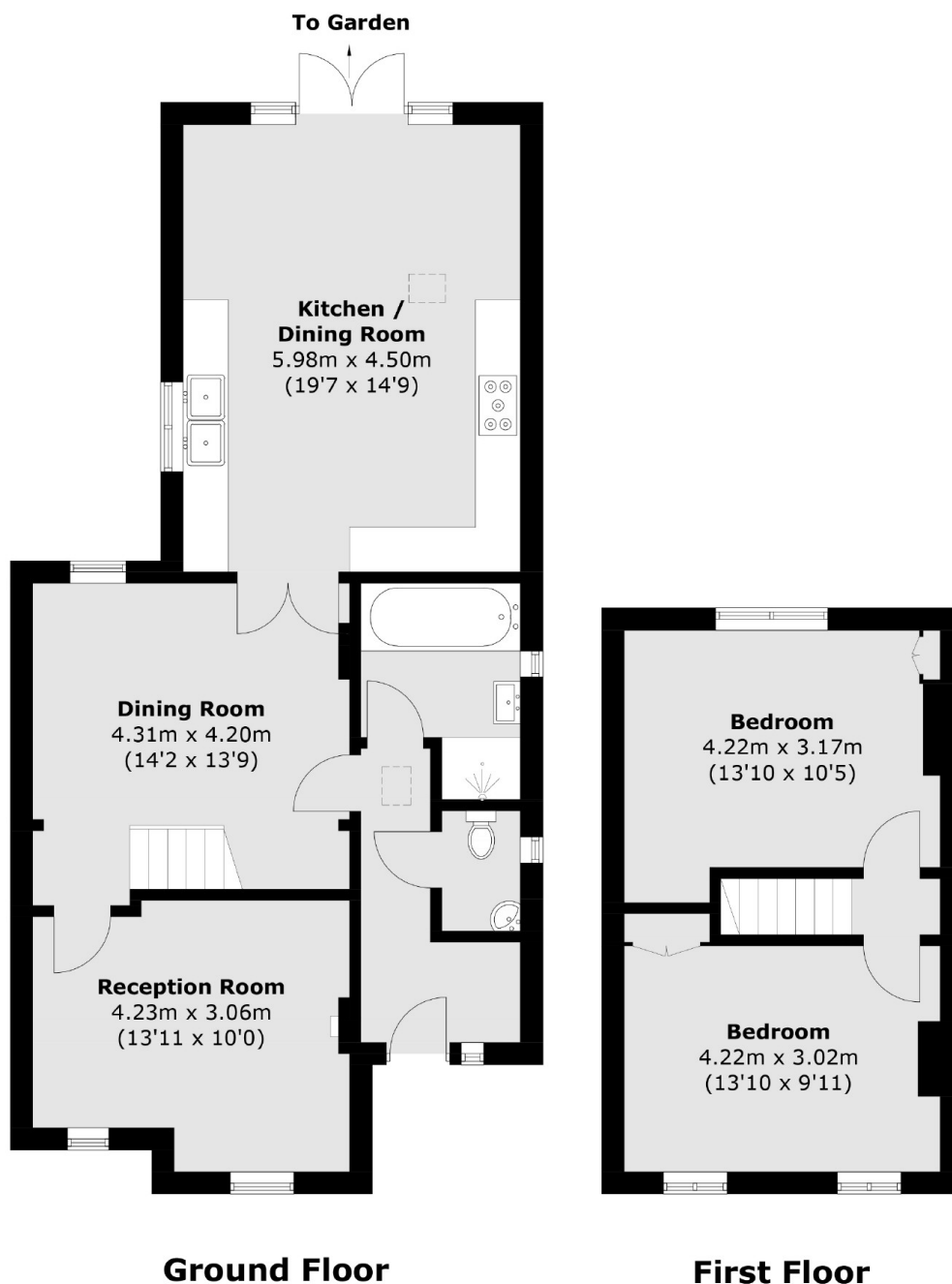
This semi detached family home is offered to the market with two double bedrooms, two reception rooms, a large open plan kitchen dining room, a spacious bathroom suite with a separate bath and shower and a fantastic sunny garden. This property also benefits from allocated off-street parking, side access and the possibility to convert downstairs living room to third bedroom. (STPP).

Located on the borders of Surbiton, the area has access to a good local bus service and excellent road links. Surbiton has a good selection of local shops, bars and restaurants and a mainline station with services into London Waterloo in less than 20 minutes.

### Features

Semi Detached  
Two Double Bedrooms  
Off-Street Parking  
Large Rear Garden  
Open Plan Living  
Scope To Extend (STPP)

# Tolworth Road, Surbiton, KT6



Total area (approx.): 104.6 sq. m (1,125.9 sq. ft)

## Dexters

Surbiton  
4 Claremont Road  
Surbiton  
KT6 4QU  
Sales  
020 8390 3939

Energy Rating: D. We aim to make our particulars both accurate and reliable. However they are not guaranteed; nor do they form part of an offer or contract. If you require clarification on any points then please contact us, especially if you're traveling some distance to view. Please note that appliances and heating systems have not been tested and therefore no warranties can be given as to their good working order.

 **RICS** | Regulated  
Estate Agent  
and Letting Agent

[dexters.co.uk](https://www.dexters.co.uk)