



Tolworth Road, KT6

£599,950

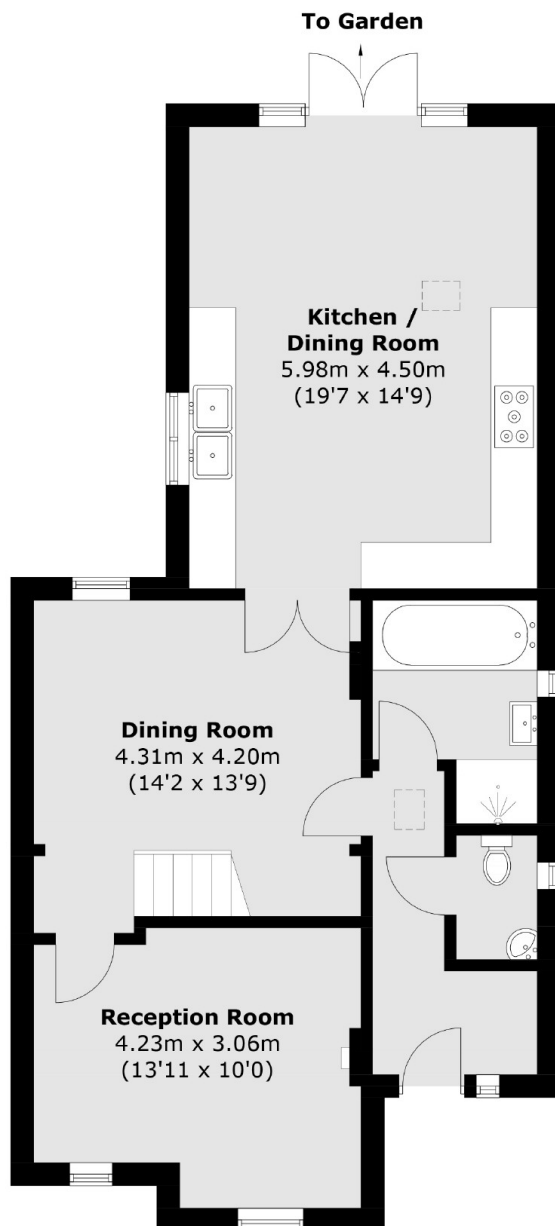
This semi detached family home is offered to the market with two double bedrooms, two reception rooms, a large open plan kitchen dining room, a spacious bathroom suite with a separate bath and shower and a fantastic sunny garden. This property also benefits from allocated off-street parking, side access and the possibility to convert downstairs living room to third bedroom. (STPP).

Located on the borders of Surbiton, the area has access to a good local bus service and excellent road links. Surbiton has a good selection of local shops, bars and restaurants and a mainline station with services into London Waterloo in less than 20 minutes.

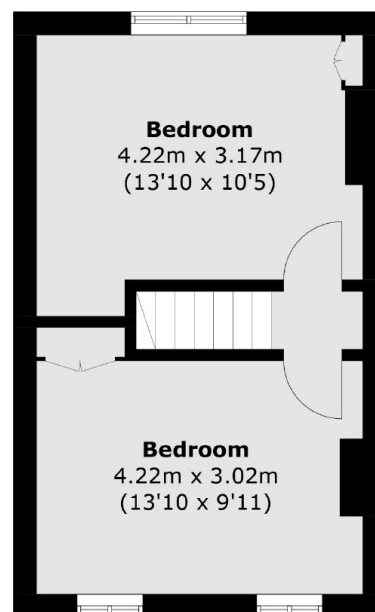
Features

- Semi Detached
- Two Double Bedrooms
- Off-Street Parking
- Large Rear Garden
- Open Plan Living
- Scope To Extend (STPP)

Tolworth Road, Surbiton, KT6



Ground Floor



First Floor

Total area (approx.): 104.6 sq. m (1,125.9 sq. ft)