



## King Charles Road, KT5

### £485,000

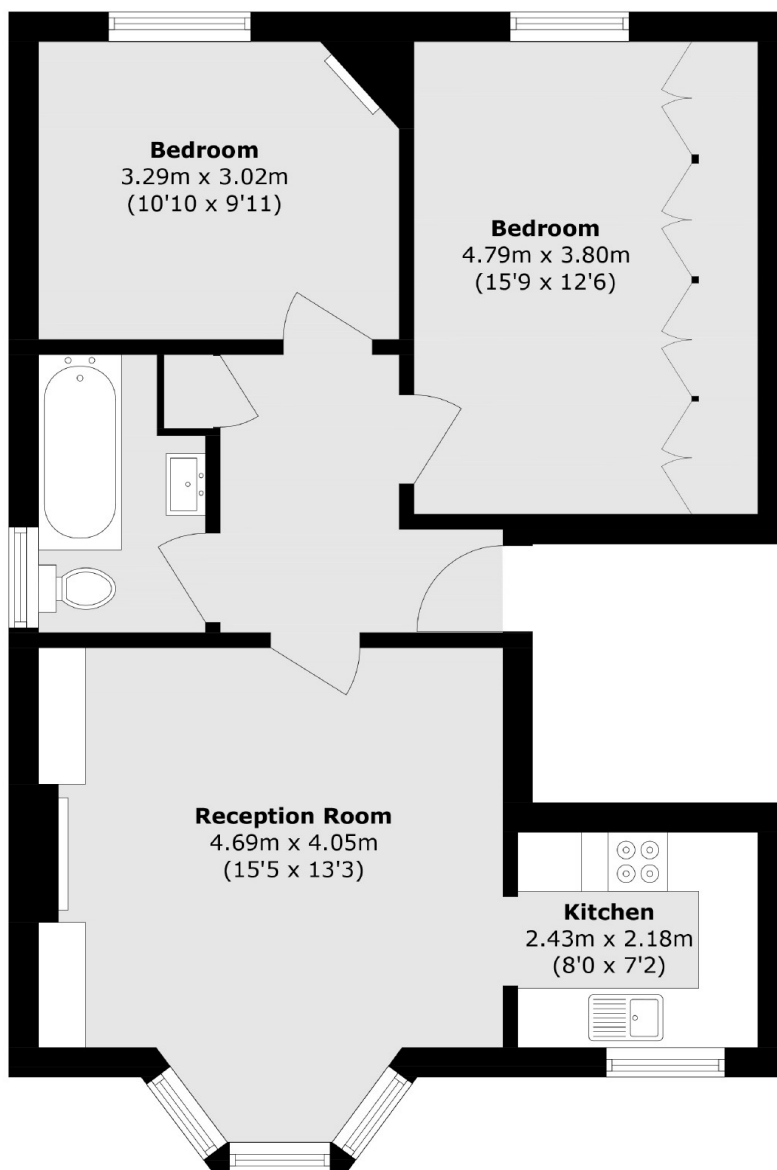
A larger than average and immaculately presented two double bedroom apartment, set within an imposing Victorian building. This property is well proportioned at over 700sqft and is full of period charm including fireplaces, cornicing, picture rails and ceiling roses. The property is offered to the market with a shared rear garden, off street parking and a share of the freehold.

King Charles Road is just half a mile away from Surbiton town centre with it's shops, bars restaurants and station with fast links into Waterloo. The property is near Surbiton's Fishponds and under a mile from Alexandra Park.

### Features

- Period Conversion
- Two Double Bedrooms
- Large Communal Garden
- Share Of Freehold
- Off Street Parking
- Period Features

# King Charles Road, Surbiton, KT5



Total area (approx.): 67.6 sq. m (727.6 sq. ft)

## Dexters

Surbiton  
2 Claremont Road  
Surbiton  
KT6 4QU  
Sales  
020 8390 3939

Energy Rating: D. We aim to make our particulars both accurate and reliable. However they are not guaranteed; nor do they form part of an offer or contract. If you require clarification on any points then please contact us, especially if you're traveling some distance to view. Please note that appliances and heating systems have not been tested and therefore no warranties can be given as to their good working order.

 **RICS** | Regulated  
Estate Agent  
and Letting Agent

[dexters.co.uk](https://www.dexters.co.uk)