

Villiers Close, KT5

£365,000

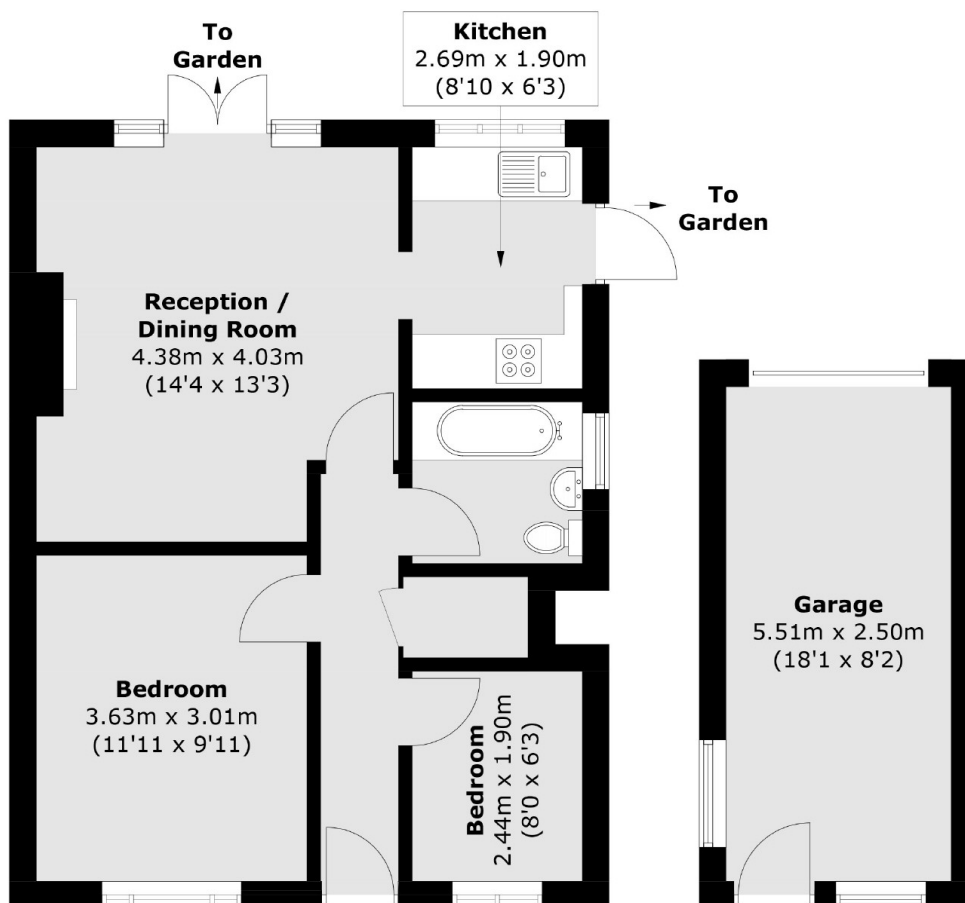
This bright and airy two bed maisonette is located in a peaceful cul-de-sac on the Kingston and Surbiton borders. There is a good sized reception room, modern kitchen, bathroom and a pretty private garden with direct access. The property further benefits from a long lease of over 900 years, a garage and a front and rear private garden.

Villiers Close is conveniently equidistant to both Kingston and Surbiton town centres and is in close proximity to outstanding primary schools. An abundance of local rail transport links are also all within a mile.

Features

- Ground Floor Maisonette
- Two Bedrooms
- Private Garden
- Garage
- Peaceful Cul-De-Sac
- Long Lease over 900 yrs

Villiers Close, Surbiton, KT5



Ground Floor

**(Not Shown In Actual
Location / Orientation)**

Total area (approx.): 49.4 sq. m (531.7 sq. ft)
Garage: 13.9 sq. m (149.6 sq. ft)