

## Old Post Office Walk, KT6

### £515,000

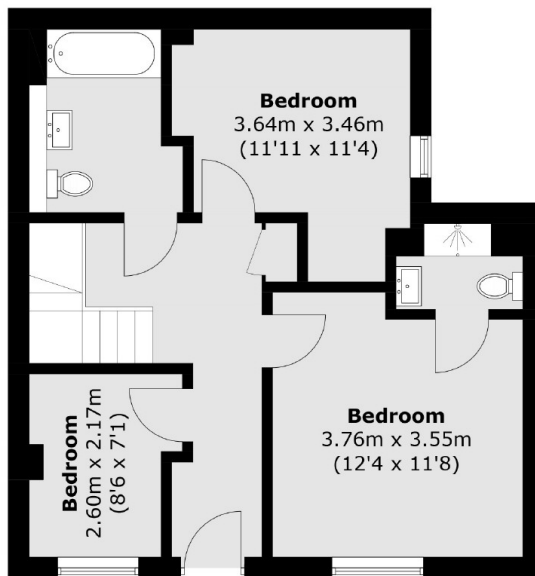
This wonderful split level mews home located in the heart of Surbiton town in the Surbiton Plaza development which is within a few hundred yards of the mainline station. The property offers four bedrooms or three bedrooms and an office, a large reception, modern kitchen, cloakroom and two bathrooms. There is no onward chain and a share of freehold.

Old Post Office Walk is peacefully nestled in the heart of Surbiton town centre, with the popular high street and mainline train station on your doorstep. It is in the catchment area for many outstanding schools.

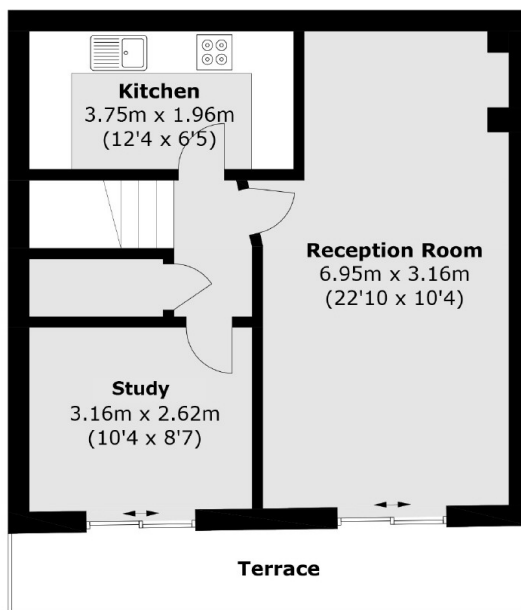
### Features

- Three/Four Bedrooms
- Two Bathrooms
- Private Terrace
- Share of Freehold
- Central Location
- Underground parking

# Old Post Office Walk, Surbiton, KT6



**Ground Floor**



**Lower Ground Floor**

Total area (approx.): 94.6 sq. m (1,018.2 sq. ft)  
Terrace: 8.4 sq. m (90.4 sq. ft)