



Maple Road, KT6

£549,950

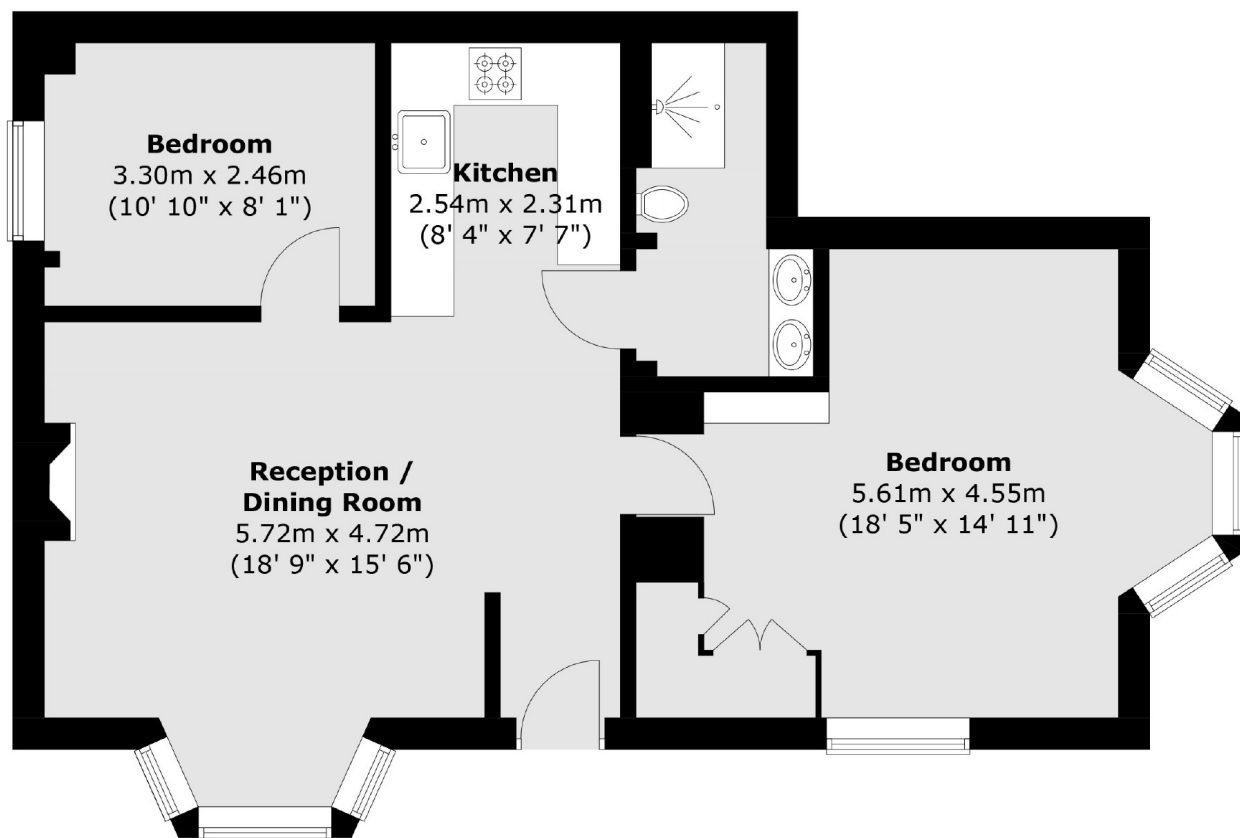
A wonderful two double bedroom maisonette, situated within an imposing Victorian building on Maple Road in the heart of Surbiton town centre. This property is beautiful and unique, with 3 metre high ceilings, herring bone flooring, a Moroccan inspired bathroom accessed via a hidden door and two lovely bedrooms.

Maple Road, a highly desirable place to live, offering an array of shops, bars, restaurants and the famous farmers market. Surbiton train station is less than a third of a mile away with fast links to Waterloo (17 mins).

Features

- Period Building
- Maisonette
- Two Double Bedrooms
- Characterful
- Immaculate Throughout
- Great Location

Maple Road, Surbiton, KT6



Total area (approx.) : 65 sq. m (700 sq. ft)