



## Portsmouth Road, KT6

### £649,950

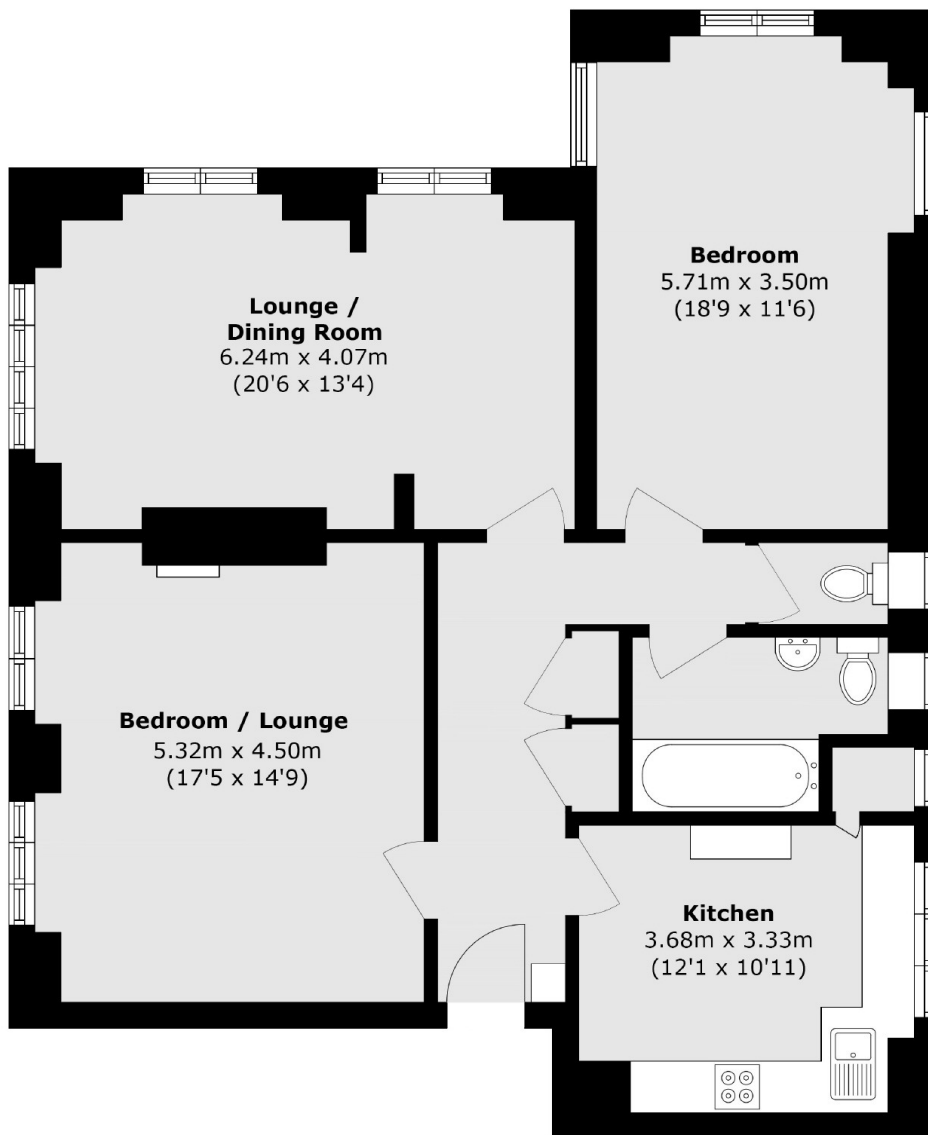
A stunning top floor, two double bedroom apartment. Situated within an art deco mansion block with panoramic views over the river Thames and the grounds of the historic Hampton Court Palace. This property is immaculate throughout, it has a top specification German integrated kitchen and some wonderful original fireplaces and features among its many benefits

Portsmouth Road runs along the idyllic River Thames and leads to Kingston town centre. Surbiton high street and mainline train station is just around the corner with fast links to London Waterloo (17 mins).

### Features

- Art Deco Mansion Block
- Top Floor
- River Views
- Lift Access
- Long Lease
- Central Location

# Portsmouth Road, Surbiton, KT6



Total area (approx.): 106.6 sq. m (1147.4 sq. ft)

## Dexters

Surbiton  
2 Claremont Road  
Surbiton  
KT6 4QU  
Sales  
020 8390 3939

Energy Rating: D. We aim to make our particulars both accurate and reliable. However they are not guaranteed; nor do they form part of an offer or contract. If you require clarification on any points then please contact us, especially if you're traveling some distance to view. Please note that appliances and heating systems have not been tested and therefore no warranties can be given as to their good working order.

 **RICS** | Regulated  
Estate Agent  
and Letting Agent

dexters.co.uk