



Elmbridge Avenue, KT5

£299,950

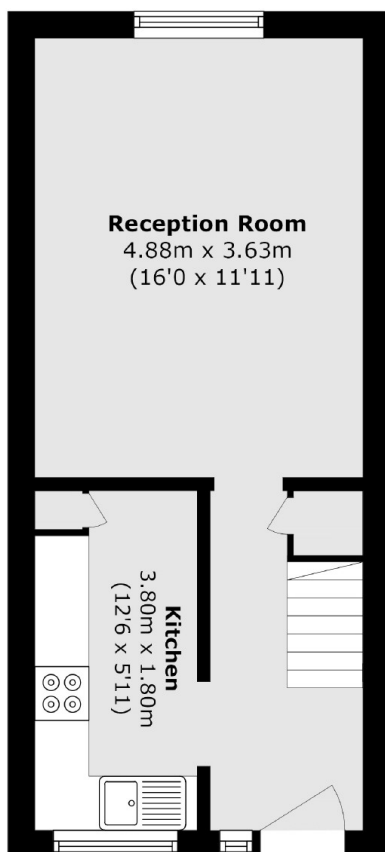
A bright and spacious, split level, two double bedroom apartment. This purpose built flat is well presented throughout and offers a separate kitchen, large reception/dining room, two double bedrooms and a smart bathroom. There are communal grounds, off street parking and it is also being sold with no onward chain

Perak Court is on Elmbridge Avenue, offering easy access to the A3 and approximately a mile away from Tolworth Broadway and Berrylands, Malden Manor and Tolworth train stations.

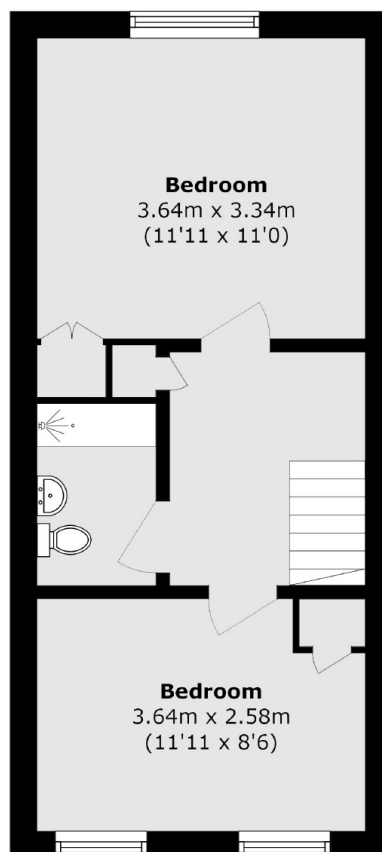
Features

- Split Level
- Two Double Bedrooms
- Communal Garden
- Off-Street Parking
- Garages To Rent
- Great Location

Elmbridge Avenue, Surbiton, KT5



Third Floor



Fourth Floor

Total area (approx.): 64.1 sq. m (689.9 sq. ft)