



## St. Andrews Square, KT6

### £385,000

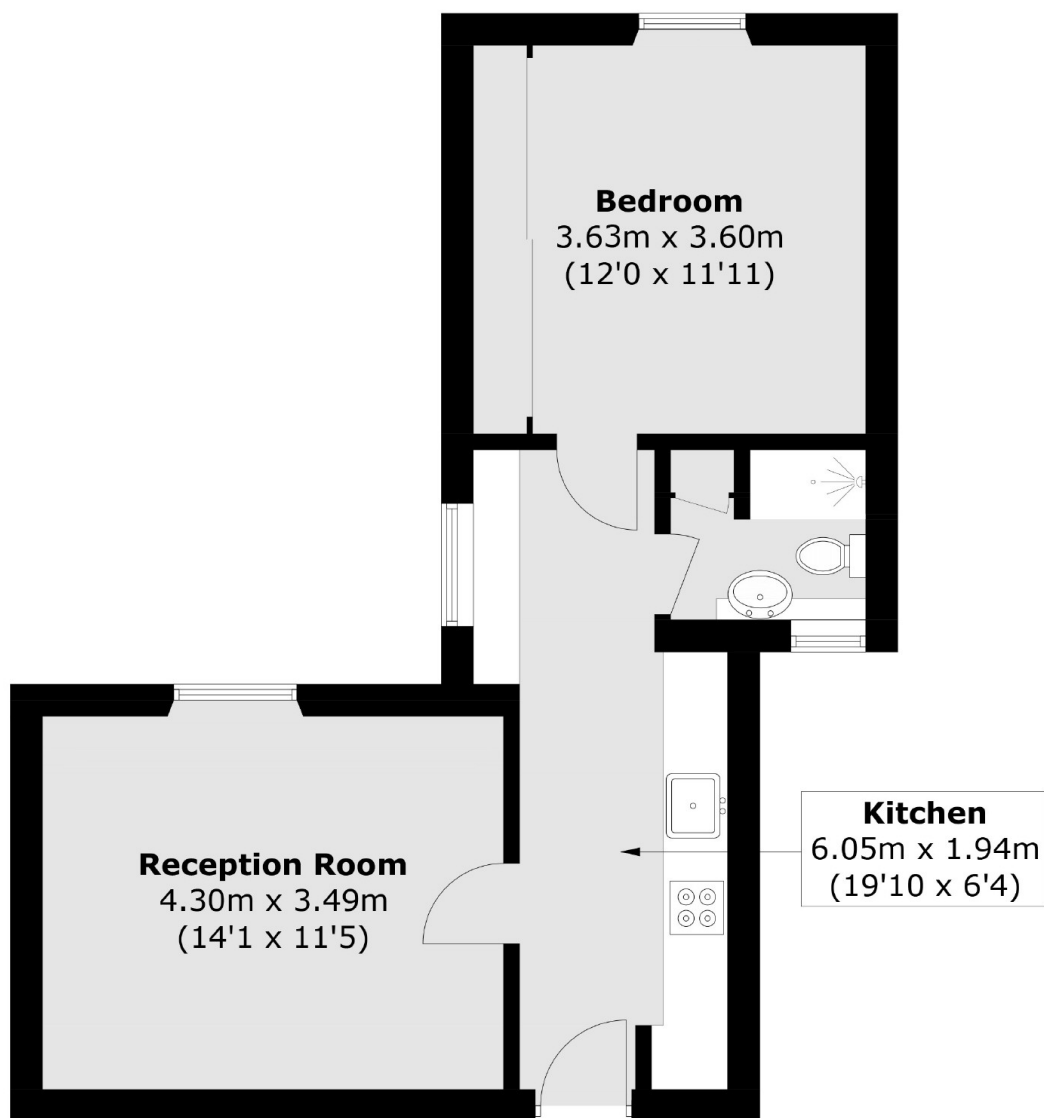
A fully refurbished, one double bedroom apartment located on the raised ground floor of this charming Victorian building. Accommodation includes a stylish modern kitchen, a large bright reception room and a share of the freehold.

St Andrews Square is in the heart of Surbiton, off of the highly desirable Maple Road with boutique shops, gastro pubs and excellent restaurants. Surbiton train station is less than half a kilometer away with it's fast and direct train to London Waterloo in 16 minutes.

### Features

- Victorian
- Raised Ground Floor
- Fully Refurbished
- One Double Bedroom
- Share Of Freehold
- Desirable Central Location

# St. Andrews Square, Surbiton, KT6



Total area (approx.): 44.6 sq. m (480.0 sq. ft)