



Gladstone Road, KT6

£649,950

Dexters



Gladstone Road, KT6

With two reception rooms, four bedrooms, two bathrooms and a large private garden, this terraced family home offers plenty of space for everyone to live comfortably. The property has been expertly extended on the ground floor and into the loft.

On the ground floor there is a front reception room with fireplace, a large extended open plan kitchen/dining room with bi-folding doors out on to the garden. There is also a downstairs family bathroom.

On the first floor there are three bedrooms, two of which are good sized doubles and a study area. The loft has been beautifully extended to create the main bedroom with Juliette balcony and an en suite shower room.

This wonderful family home is located in a peaceful cul-de-sac overlooking playing fields of a local school. An ideal property for growing families.

Gladstone Road is a peaceful cul-de-sac backing onto open green spaces of playing fields, with easy access to the A3 and regular bus links in to town. It is in Hinchley Wood School catchment and Surbiton high street and the train station are conveniently just over a mile away.

Features

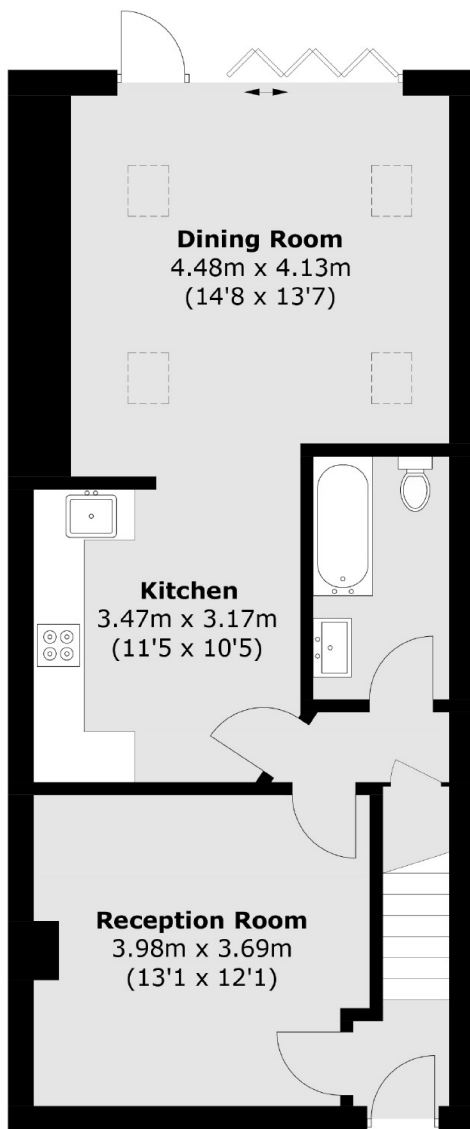
- Four Bedrooms
- Two Bathrooms
- Open Plan Kitchen
- Loft Converted
- Front And Rear Gardens
- Cul-De-Sac Location







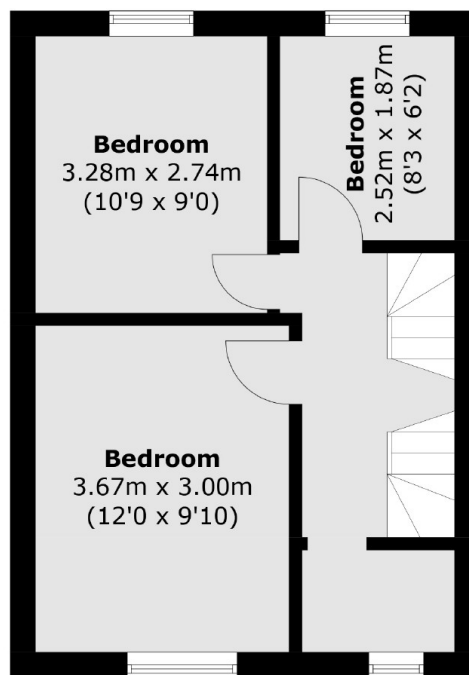
Gladstone Road, Surbiton, KT6



Ground Floor



Second Floor



First Floor

Total area (approx.): 113.2 sq. m (1,218.4 sq. ft)
(Excluding Eaves)