



**Raeburn Avenue, KT5**

**£849,950**

**Dexters**



## Raeburn Avenue, KT5

This spacious, bay fronted, five bedroom 1930's semi detached home was one of the first properties built on the road and is nearly 2000sq ft. The property sits on a large plot and has three reception rooms, a well presented kitchen, downstairs W/C, a garage/workshop, off street parking to the front and a beautiful, large and mature garden.

The ground floor has a large welcoming hallway with access to the two spacious reception rooms and the kitchen. There is a large garden room/brick built conservatory and a WC.

The first floor has four bedrooms and a four piece family bathroom. The second floor has another double bedroom with ample storage.

To the side of the property is a garage/workshop that could be converted (STPP). There is also scope to extend further to the rear and in to the loft (STPP). There is a wonderfully spacious garden and plenty of off street parking.

Raeburn Avenue is in the family-friendly area of Berrylands, approximately a mile away from four mainline train stations and in great catchment area for excellent local schools.

### Features

- Semi-Detached
- Nearly 2000sq ft
- Three Reception Rooms
- Five Bedrooms
- End of Chain
- Scope to Extend (STPP)







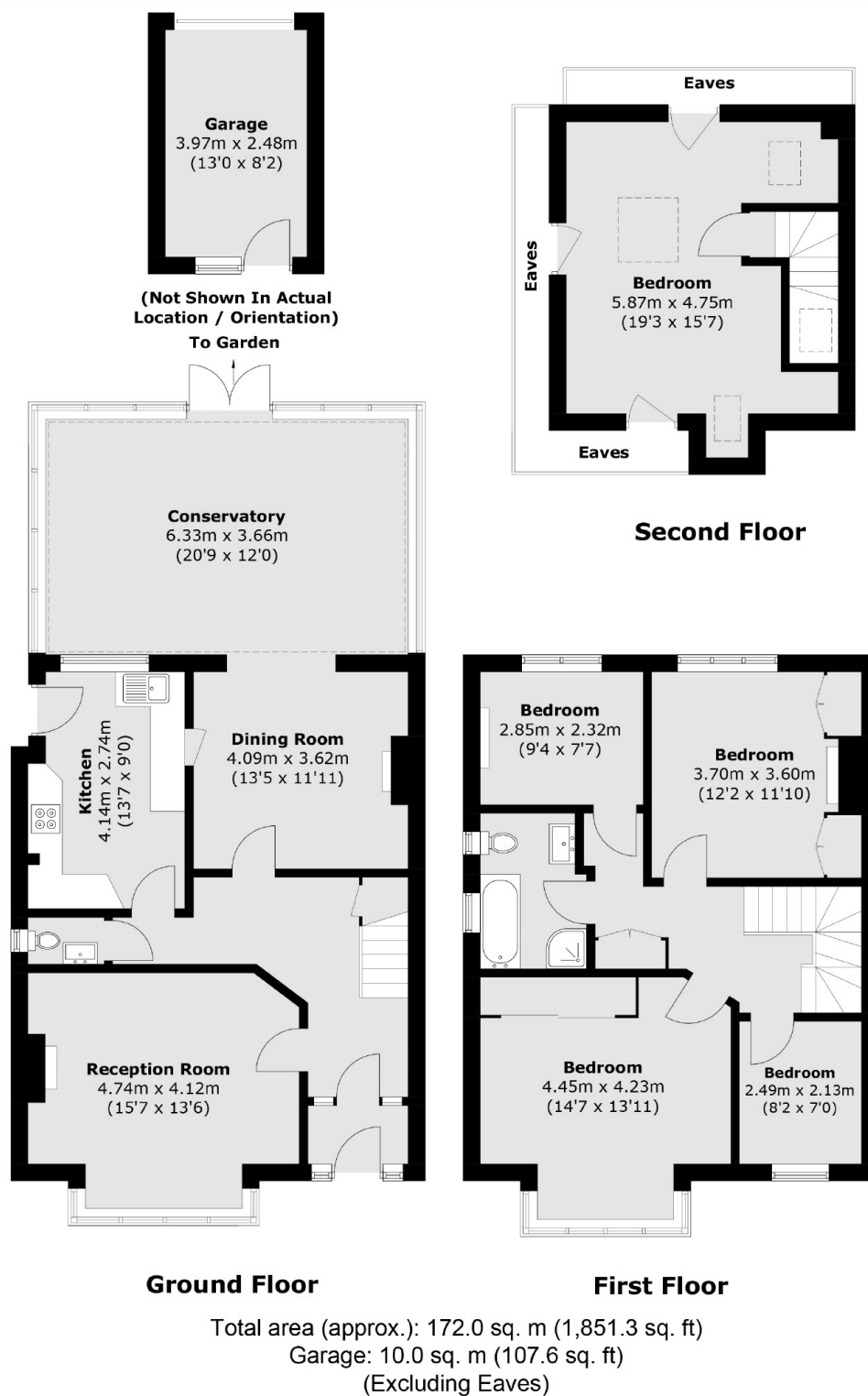








# Raeburn Avenue, Surbiton, KT5



## Dexters

Surbiton  
2 Claremont Road  
Surbiton  
KT6 4QU  
Sales  
020 8390 3939

Energy Rating: E. We aim to make our particulars both accurate and reliable. However they are not guaranteed; nor do they form part of an offer or contract. If you require clarification on any points then please contact us, especially if you're traveling some distance to view. Please note that appliances and heating systems have not been tested and therefore no warranties can be given as to their good working order.

**RICS** Regulated Estate Agent and Letting Agent

dexters.co.uk