



## High Street, KT7

£625,000

An immaculately presented spacious split level maisonette in the heart of Thames Ditton Village close to the River Thames. With three double bedrooms, two bathrooms, an open plan living space with guest WC and a lovely private garden this property is a must see. It further benefits from a long lease and allocated off street and secure parking.

Peacefully located in the heart of Thames Ditton, local amenities and outstanding schools are on the doorstep. Thames Ditton train station is 0.3 miles away and the River Thames is just 0.2 miles away.

### Features

- Three Double Bedrooms
- Two Bathrooms & guest W/C
- Private Rear Garden
- Allocated Parking
- Long Lease
- Village Location



## High Street, KT7

This superbly located property has its own front door leading to the open plan kitchen/dining/family room which has bi-folding doors to a sunny and private garden, with rear access to the allocated parking space.

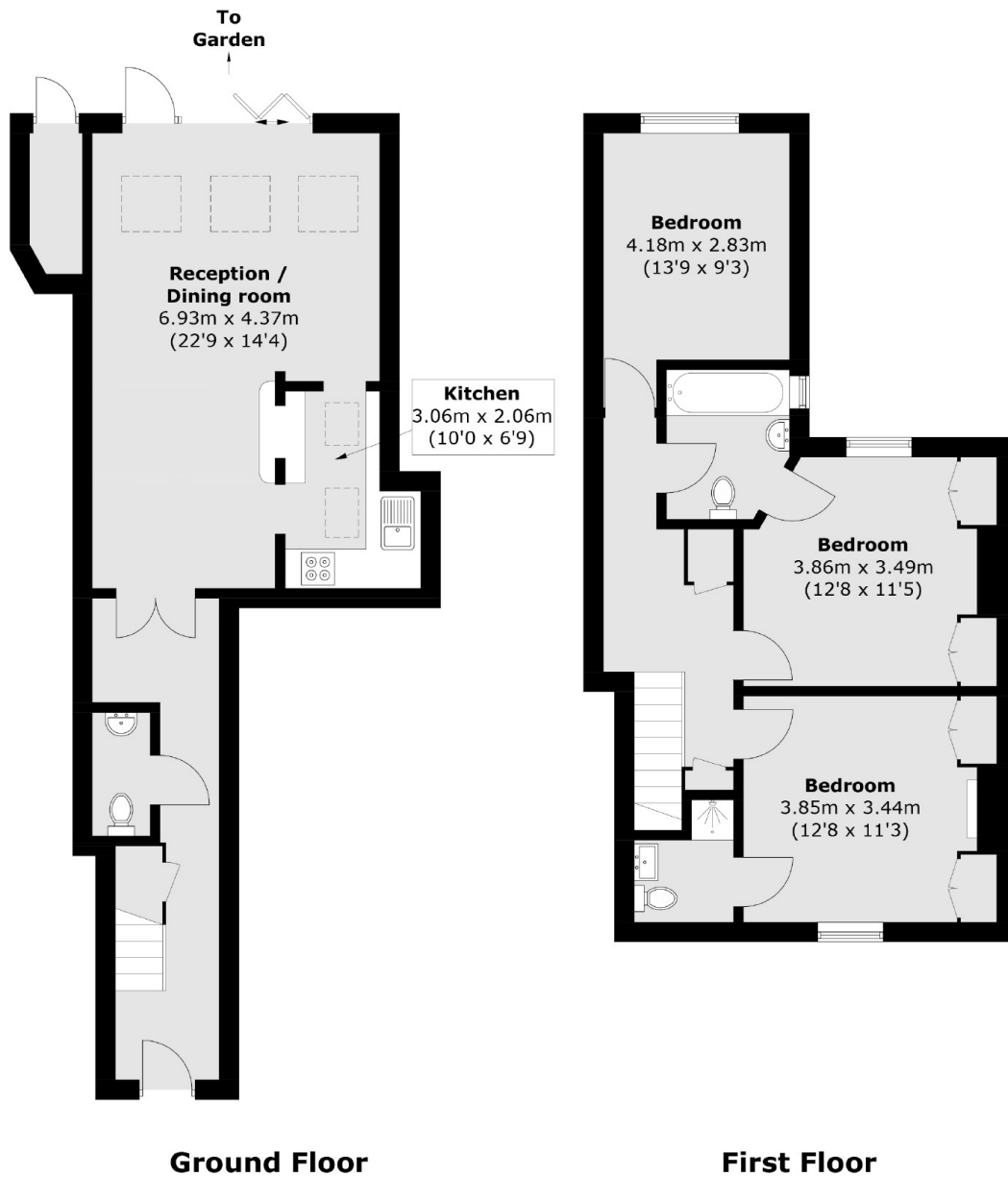
Upstairs are three good sized double bedrooms, one with en-suite bathroom. There is also a 'Jack & Jill' family bathroom, utility cupboard and access to large loft storage.

The property is deceptively large at nearly 1100 sq ft and is ideal for those that want to live in the picturesque Thames Ditton Village while having fast access to London.





# High Street, Thames Ditton, KT7



Total area (approx.): 99.4 sq. m (1,069.9 sq. ft)  
External Storage : 1.8 sq. m (19.4 sq. ft)

## Dexters

Surbiton  
2 Claremont Road  
Surbiton  
KT6 4QU  
Sales  
020 8390 3939

Energy Rating: C. We aim to make our particulars both accurate and reliable. However they are not guaranteed; nor do they form part of an offer or contract. If you require clarification on any points then please contact us, especially if you're traveling some distance to view. Please note that appliances and heating systems have not been tested and therefore no warranties can be given as to their good working order.

 **RICS** | Regulated  
Estate Agent  
and Letting Agent

dexters.co.uk