



Beresford Avenue, KT5

£795,000

Dexters



Beresford Avenue, KT5

A well presented three bedroom family home located in a popular and peaceful road in Surbton. The property has two reception rooms, an open plan kitchen/diner with utility room and downstairs w/c. The property further benefits from a large and beautiful rear garden, a garage, several storage sheds and off street parking. There is further scope to extend further to the side and into the loft (STPP).

Downstairs this wonderful family home has a porch leading to the entrance hall. There is a bay fronted through reception room with doors to separate the rooms if needs be. The property has been extended to create an open plan kitchen breakfast room with utility room and downstairs W/C.

Upstairs there are three bedrooms and a family bathroom with separate toilet and a large loft for storage. The garden is immaculate, spacious with plenty of storage options.

Beresford Avenue is a peaceful tree lined residential road with easy access to the A3 and approximately half a mile away from Tolworth train station, with its quick links to London Waterloo.

Features

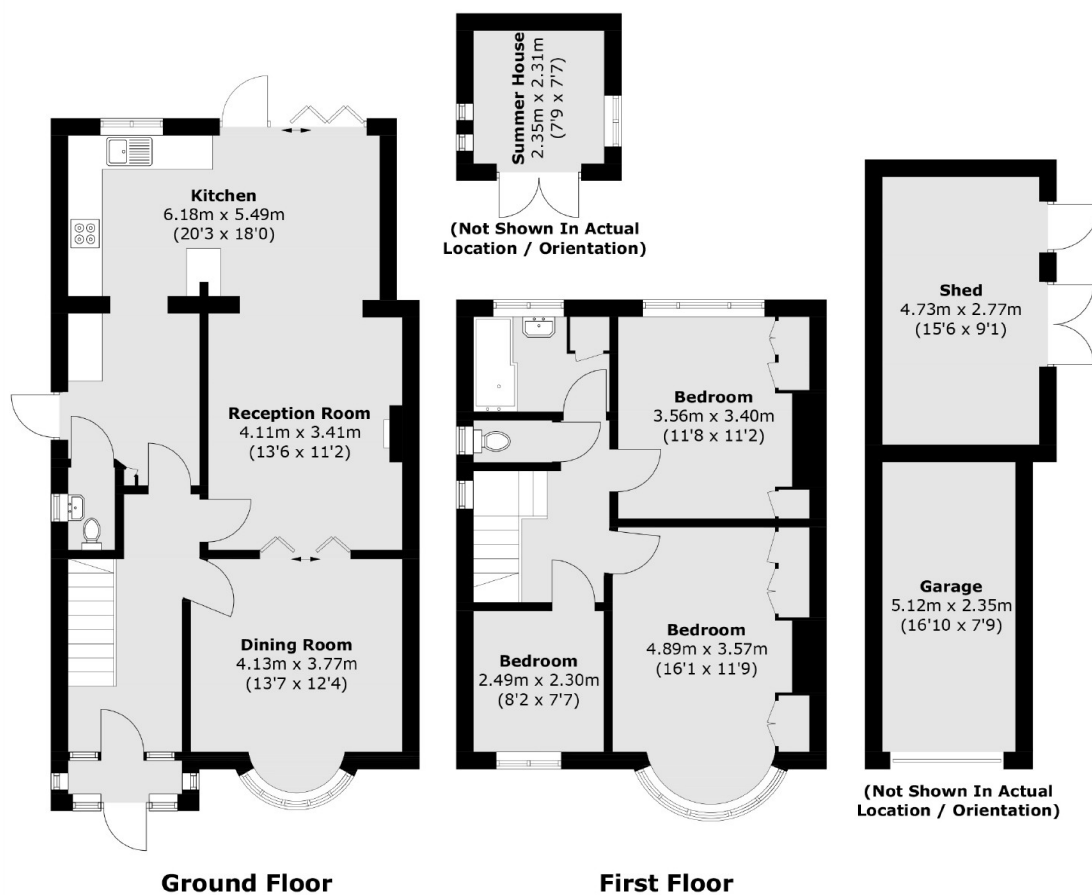
- Three Bedroom House
- Open Plan Kitchen
- Utility room
- Garage and Sheds
- Large Pretty Garden
- Off Street Parking







Beresford Avenue, Surbiton, KT5



Total area (approx.): 112.8 sq. m (1,214.2 sq. ft)
Outbuildings / Garage: 31.1 sq. m (334.7 sq. ft)