



St. Philips Road, KT6

£575,000

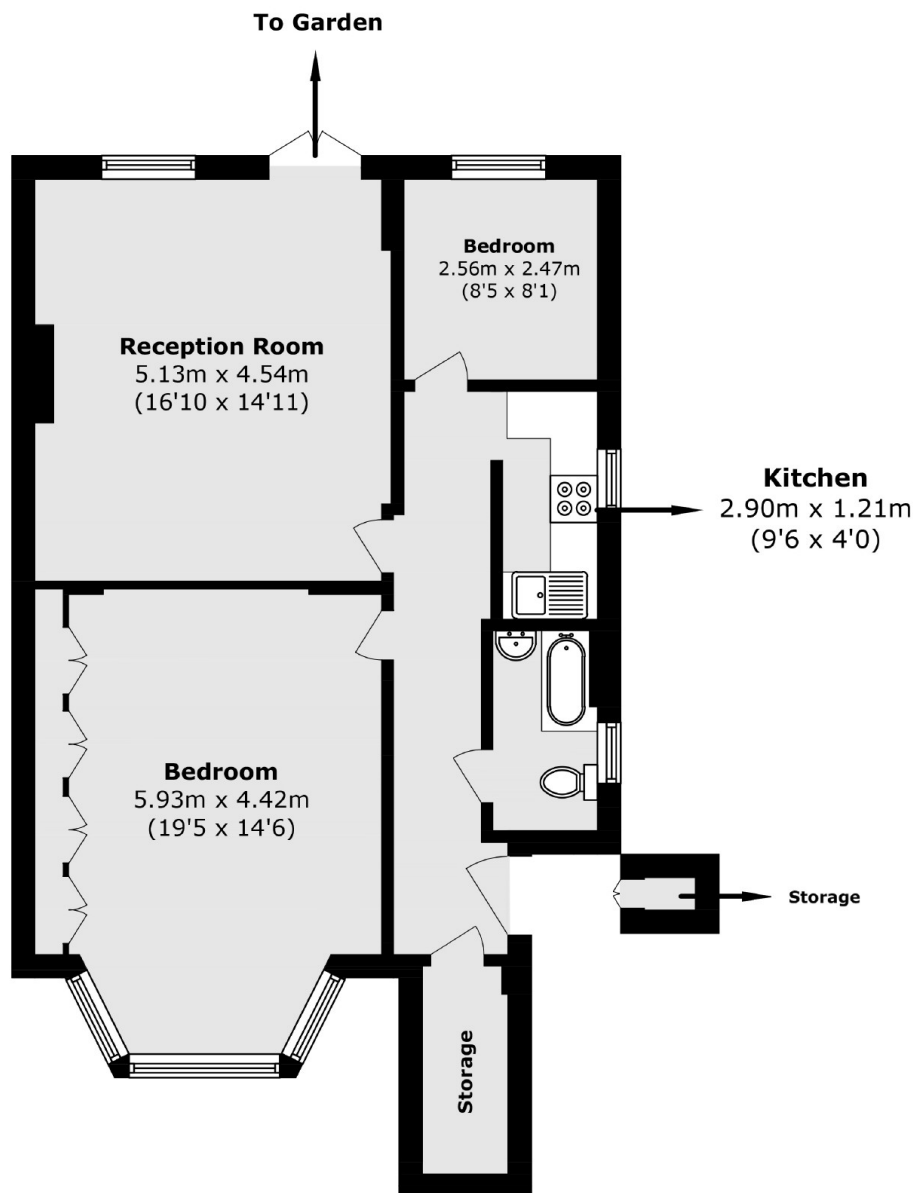
This immaculate two bedroom ground floor apartment is set within an impressive imposing period building in the centre of Surbiton. The property has its own private entrance, a newly refurbished kitchen and bathroom, a larger than average principle bedroom, spacious reception room and a private garden.

St. Phillips Road is peacefully located in the heart of Surbiton, with everything you need all less than half a mile away including the River Thames, the mainline train station and Surbiton's high street.

Features

- Period Building
- Central Location
- Two Bedrooms
- Immaculately Presented
- Private Garden
- Share of Freehold

St. Philips Road, Surbiton, KT6



Total area (approx.): 75.4 sq. m (811.6 sq. ft)
Exterior Storage Total area (approx.): 2.6 sq. m (27.9 sq. ft)

Dexters

Surbiton
2 Claremont Road
Surbiton
KT6 4QU
Sales
020 8390 3939

Energy Rating: D. We aim to make our particulars both accurate and reliable. However they are not guaranteed; nor do they form part of an offer or contract. If you require clarification on any points then please contact us, especially if you're traveling some distance to view. Please note that appliances and heating systems have not been tested and therefore no warranties can be given as to their good working order.

 **RICS** | Regulated
Estate Agent
and Letting Agent

[dexters.co.uk](https://www.dexters.co.uk)