



Parklands, KT5

£799,950

Dexters



Parklands, KT5

This rarely available ground floor apartment offers an impressive 1100 sq ft of comfortable living space. This stunning apartment offers a spacious reception room, open plan modern kitchen, a conservatory, two bedrooms, bathroom and a study/utility room in the basement. There is also a 60ft private garden and a share of the freehold.

This vast period conversion apartment has its own large welcoming entrance hall that leads to the bay fronted reception room with high ceilings and original period features.

The kitchen/diner is stylish and modern and leads through to the conservatory/reception that overlooks the private 60ft garden. There is scope to extend this further (planning permission was in place but has now lapsed).

The property has a large main bedroom with bay window and lots of storage space, there is a large four piece bathroom, a second bedroom and a study/utility room.

Parklands is a sought after tree lined road, being about half a mile from Surbiton High Street, with its array of shops, bars, restaurants and convenient mainline train station.

Features

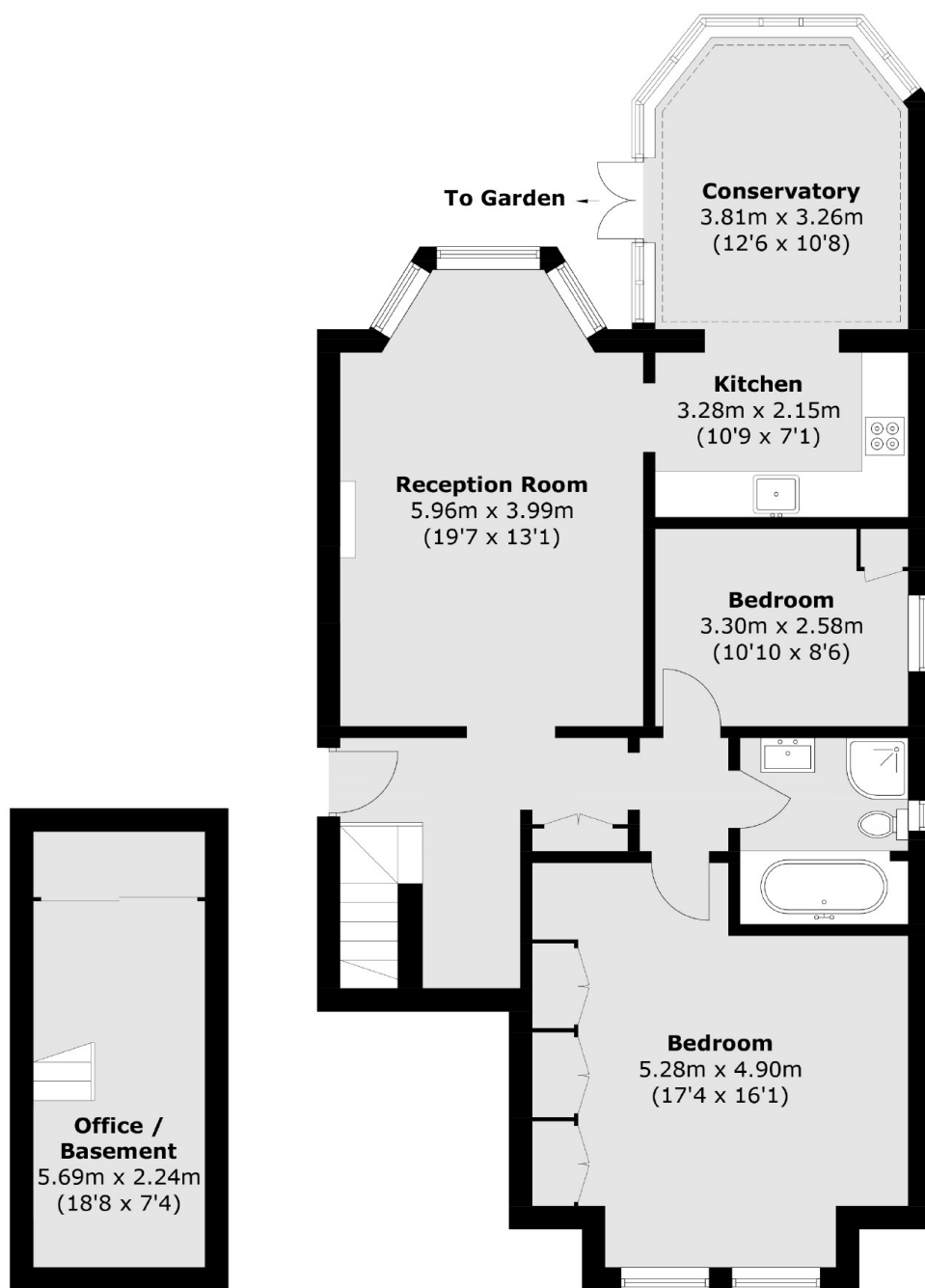
- Ground Floor
- Excellent Condition
- Two Reception Rooms
- Two Bedrooms
- Large Garden
- Desirable Location







Parklands, Surbiton, KT5



Lower Ground Floor

Ground Floor

Total area (approx.): 105.9 sq. m (1,139.9 sq. ft)