



Lovelace Gardens, KT6

£265,000

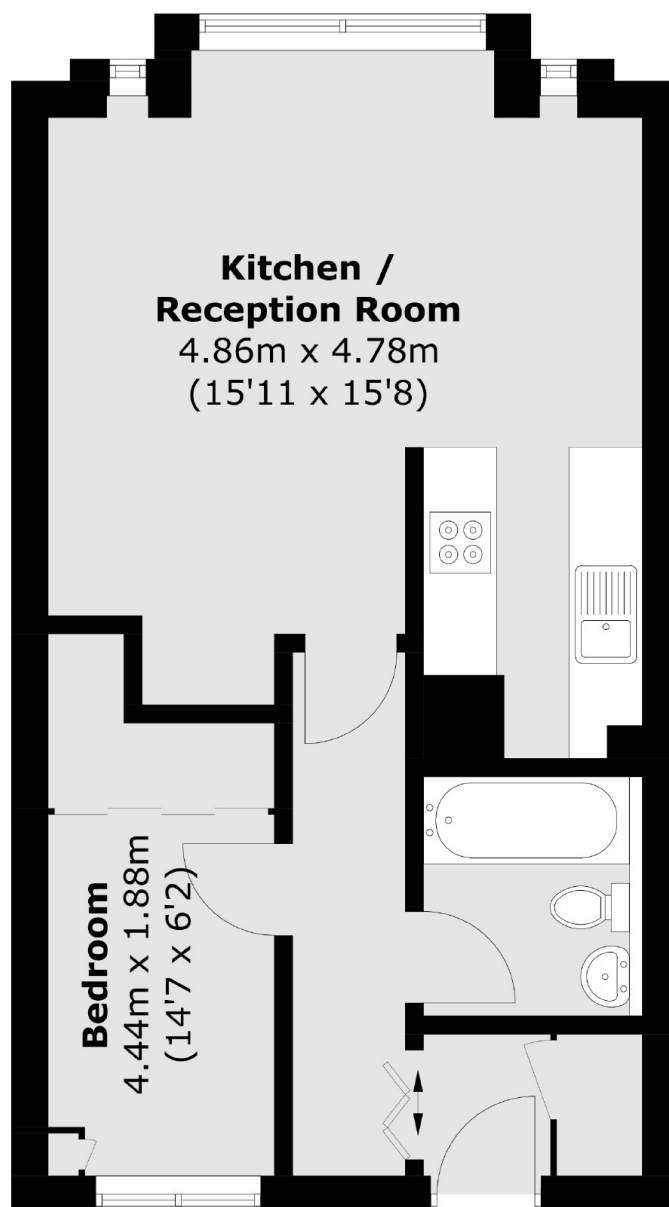
A ground floor one bedroom apartment in a desirable road in central Surbiton with a spacious reception room, open plan kitchen and bathroom. The property also benefits from a share of the freehold, allocated parking, a shed for storage, communal gardens and no onward chain.

Lovelace Gardens is a sought after tree lined road and has everything you need on the doorstep, including Surbiton High Street and train station, the river and the desirable Maple Road.

Features

- Ground floor Apartment
- One Bedroom
- Storage Shed
- Allocated Parking
- Desirable Road
- No Onward Chain

Lovelace Gardens, Surbiton, KT6



Total area (approx.): 43.7 sq. m (470.3 sq. ft)

Dexters

Surbiton
2 Claremont Road
Surbiton
KT6 4QU

Sales
020 8390 3939

Energy Rating: C. We aim to make our particulars both accurate and reliable. However they are not guaranteed; nor do they form part of an offer or contract. If you require clarification on any points then please contact us, especially if you're traveling some distance to view. Please note that appliances and heating systems have not been tested and therefore no warranties can be given as to their good working order.

 **RICS** | Regulated
Estate Agent
and Letting Agent

[dexters.co.uk](https://www.dexters.co.uk)