



Anglers Reach, KT6

£575,000

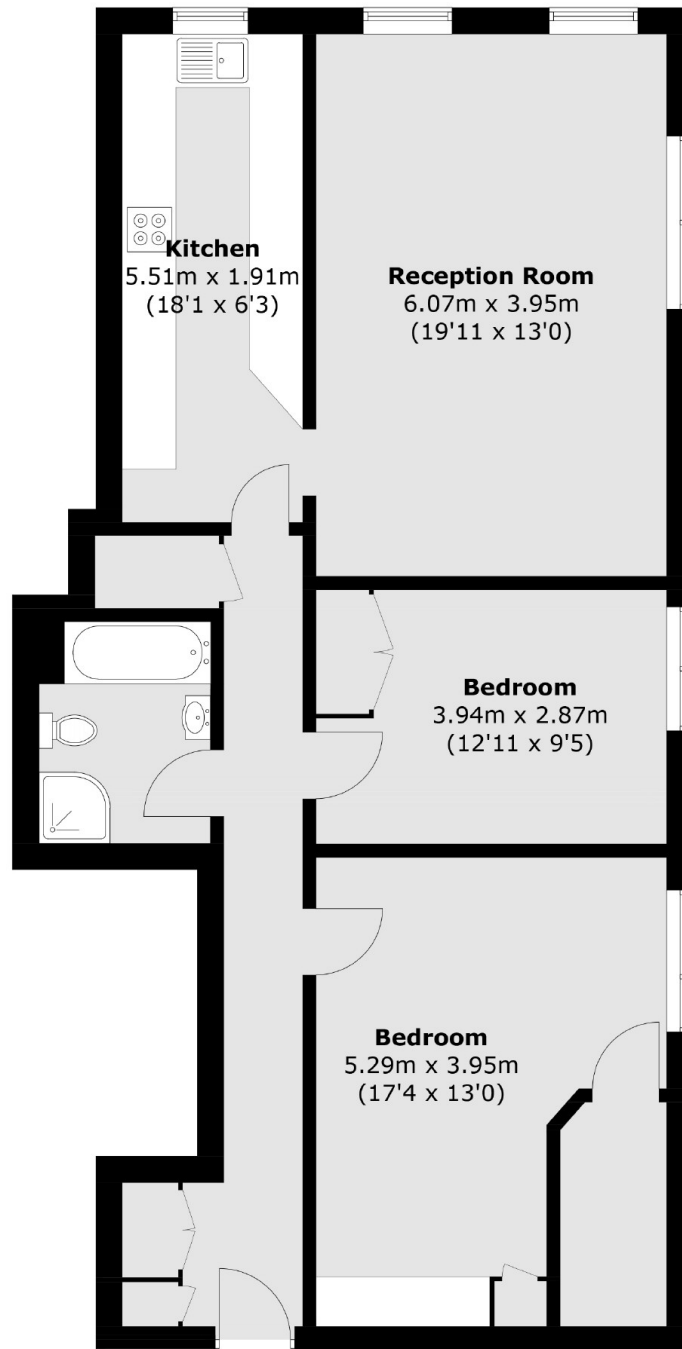
A bright and spacious flat with stunning far reaching views of the river, Home Park and beyond. There is a large double reception room facing the river with double aspect windows, a good sized separate kitchen, large master bedroom with walk in wardrobe, a further double bedroom and a bathroom. This spacious apartment is over 900 sq ft, has a lift and a share of the freehold.

Anglers Reach is a popular block situated in one of Surbiton's most attractive sought after tree-lined roads. Surbiton's high street and mainline station are both within 0.5 miles and the River Thames is on your doorstep. Kingston with its array of restaurants and shops is within half a mile.

Features

River Side Apartment
Bright & Spacious
Two Double Bedrooms
Stunning River Views
Over 900 Sq Ft
Close to Station

Anglers Reach, Surbiton, KT6



Total area (approx.): 87.8 sq. m (945.1 sq. ft)

Dexters

Surbiton
2 Claremont Road
Surbiton
KT6 4QU

Sales
020 8390 3939

Energy Rating: B. We aim to make our particulars both accurate and reliable. However they are not guaranteed; nor do they form part of an offer or contract. If you require clarification on any points then please contact us, especially if you're traveling some distance to view. Please note that appliances and heating systems have not been tested and therefore no warranties can be given as to their good working order.

 **RICS** | Regulated
Estate Agent
and Letting Agent

[dexters.co.uk](https://www.dexters.co.uk)