



**Arlington Road, KT6**  
**£950,000**

**Dexters**



## Arlington Road, KT6

This stunning exposed brick, bay fronted three bedroom extended Victorian home is located in central Surbiton close to the Station. Beautifully presented throughout and offering both original character and modern luxury, this property has a front reception room, beautiful open plan kitchen/diner, utility room, WC, three generous bedrooms and an immaculate bathroom.

The ground floor offers a good sized front reception room with a fireplace, a bay window and high ceilings. There is a stylish extended open plan kitchen/dining room with underfloor heating and bi-folding doors out to the rear garden.

On the first floor there are three bedrooms with period features and an immaculate family bathroom with a walk in shower and a bathtub.

To the rear of the property there is a South West facing landscaped garden, storage shed and a pretty pond with fish. There is also side and rear access.

Arlington Road is in the heart of Surbiton with everything you need less than half a mile away, including the high street, the mainline train station, with fast trains to Waterloo and the desirable Maple Road.

### Features

- Semi-Detached
- Three Bedrooms
- Two Bathrooms
- Central Surbiton
- Period Features
- Potential to Extend (STPP)





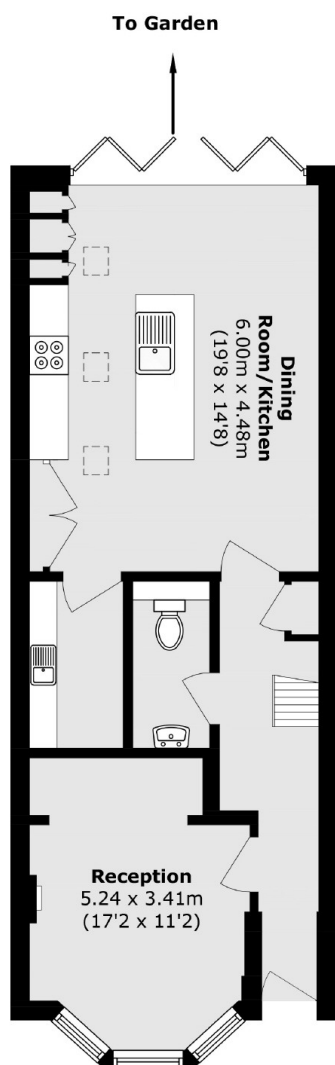




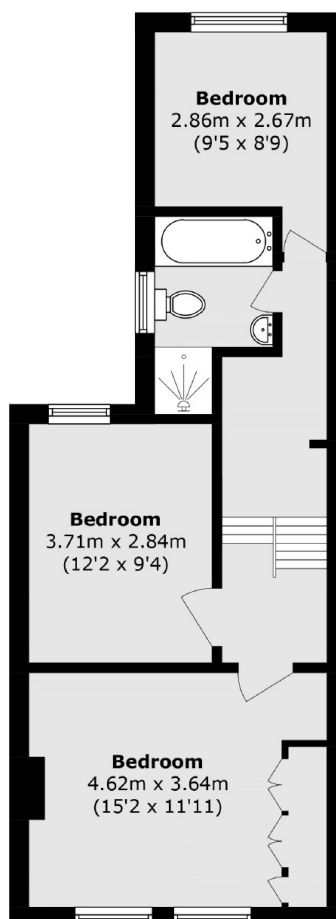




# Arlington Road, Surbiton, KT6



**Ground Floor**



**First Floor**

Total area (approx.): 108.9 sq. m (1172.1 sq. ft)