



## Minniedale, KT5

### £725,000

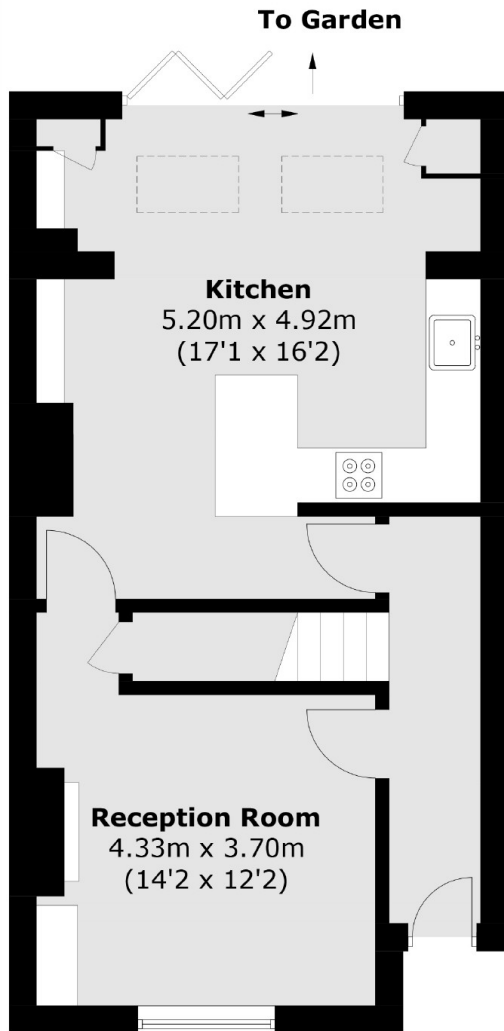
A beautiful, exposed brick, Victorian cottage. This property is immaculately presented throughout and offers two double bedrooms, a bright front reception room and a stunning extended kitchen diner. To the rear is a well maintained private garden.

Minniedale is just over half a mile away from the hustle and bustle of Surbiton high street, with the mainline train station and a vast selection of shops, bars and restaurants.

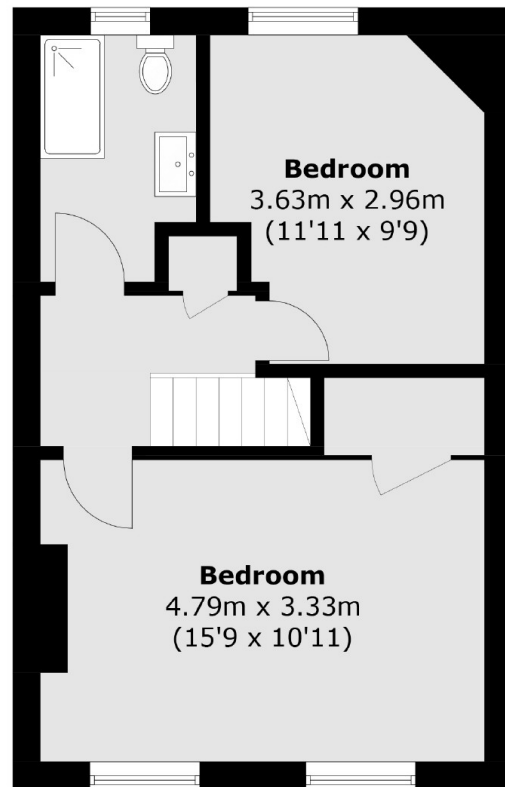
### Features

- Victorian Cottage
- Immaculately Presented
- Extended Kitchen/Diner
- Two Double Bedrooms
- Private Rear Garden
- Central Location

# Minniedale, Surbiton, KT5



**Ground Floor**



**First Floor**

Total area (approx.): 84.8 sq. m (912.8 sq. ft)