

St. Andrew's Road, KT6

£575,000

This modern and stylish top floor flat is situated in a sought after development in the the centre of Surbiton. The property was built in 2020 has an open plan kitchen/ living/ dining room, two double bedrooms, two bathrooms and a private roof terrace. It further benefits from six years remaining on the NHBC, communal gardens and no onward chain.

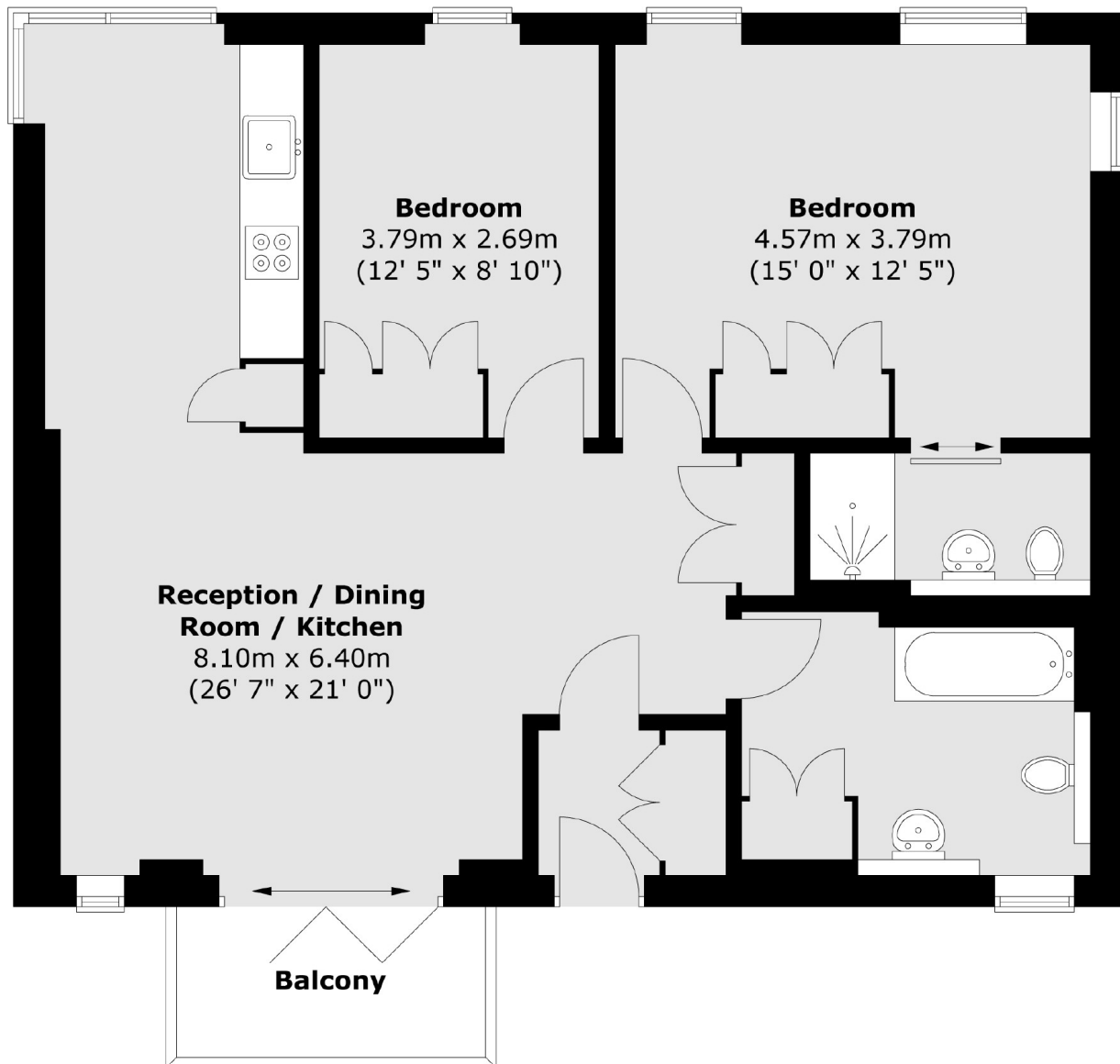
St Andrews Yard is perfectly located in the centre of Surbiton offering easy access to a range of amenities including bars, restaurants and shops. Surbiton station is just 0.2 miles from the development which provides excellent links in to and out of London with access to London Waterloo in just 17 minutes.

Features

- Top Floor
- Two Double Bedrooms
- Stylish Design
- Private Roof Terrace
- Two Bathrooms
- No Onward Chain

St. Andrew's Road, Surbiton, KT6

Second Floor



Total area (approx.) : 81.1 sq. m (873 sq. ft)
Total balcony area (approx.) : 4.3 sq. m (46 sq. ft)