



Tolworth Park Road, KT6

£899,950

Dexters



Tolworth Park Road, KT6

A stunning, exposed brick, bay fronted, three bedroom, extended Victorian home. Beautifully presented throughout and offering both original character and modern luxury, this property has a front reception room, beautiful kitchen diner, utility room, WC, three generous bedrooms and an immaculate bathroom

This property has a striking period style balustrade porch and once inside, the ground floor offers a bright front reception room with fireplace and coving, a smart utility room, WC and a fantastic extended kitchen dining space with glass roof lantern and doors out to the rear garden.

On the first floor there are three perfectly presented bedrooms with period features and fireplaces, and an immaculate family bathroom with a free standing bath.

To the rear of the property there is a south facing landscaped garden with patio, a smart and useful garden shed and to the front there is off street parking.

Tolworth Park Road is a peaceful road just over a mile away to Surbiton town centre with its fast link train line to London. Tolworth's mainline train station is just half a mile away and has easy access to the A3.

Features

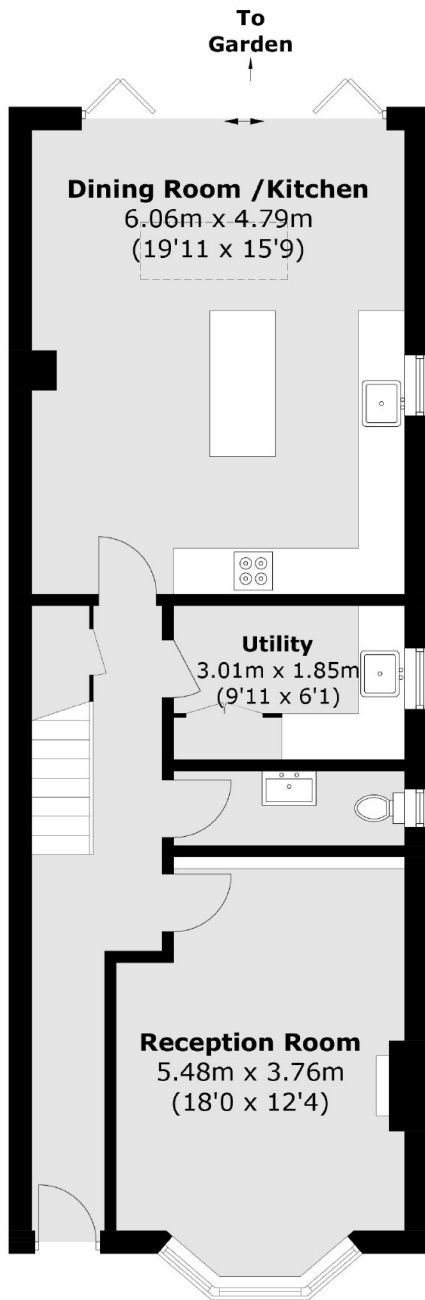
- Semi Detached
- Period Home
- Three Bedrooms
- Rear Extended
- Off Street Parking
- Potential To Extend (STPP)



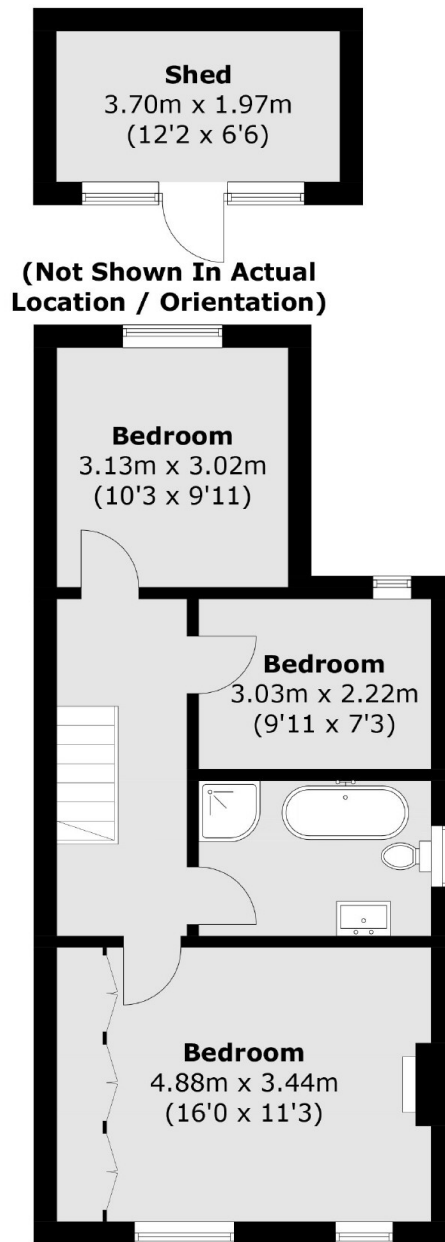




Tolworth Park Road, Surbiton, KT6



Ground Floor



First Floor

Total area (approx.): 121.2 sq. m (1304.6 sq. ft)
Shed: 7.4 sq. m (79.6 sq. ft)