

## Avenue South, KT5

### £429,950

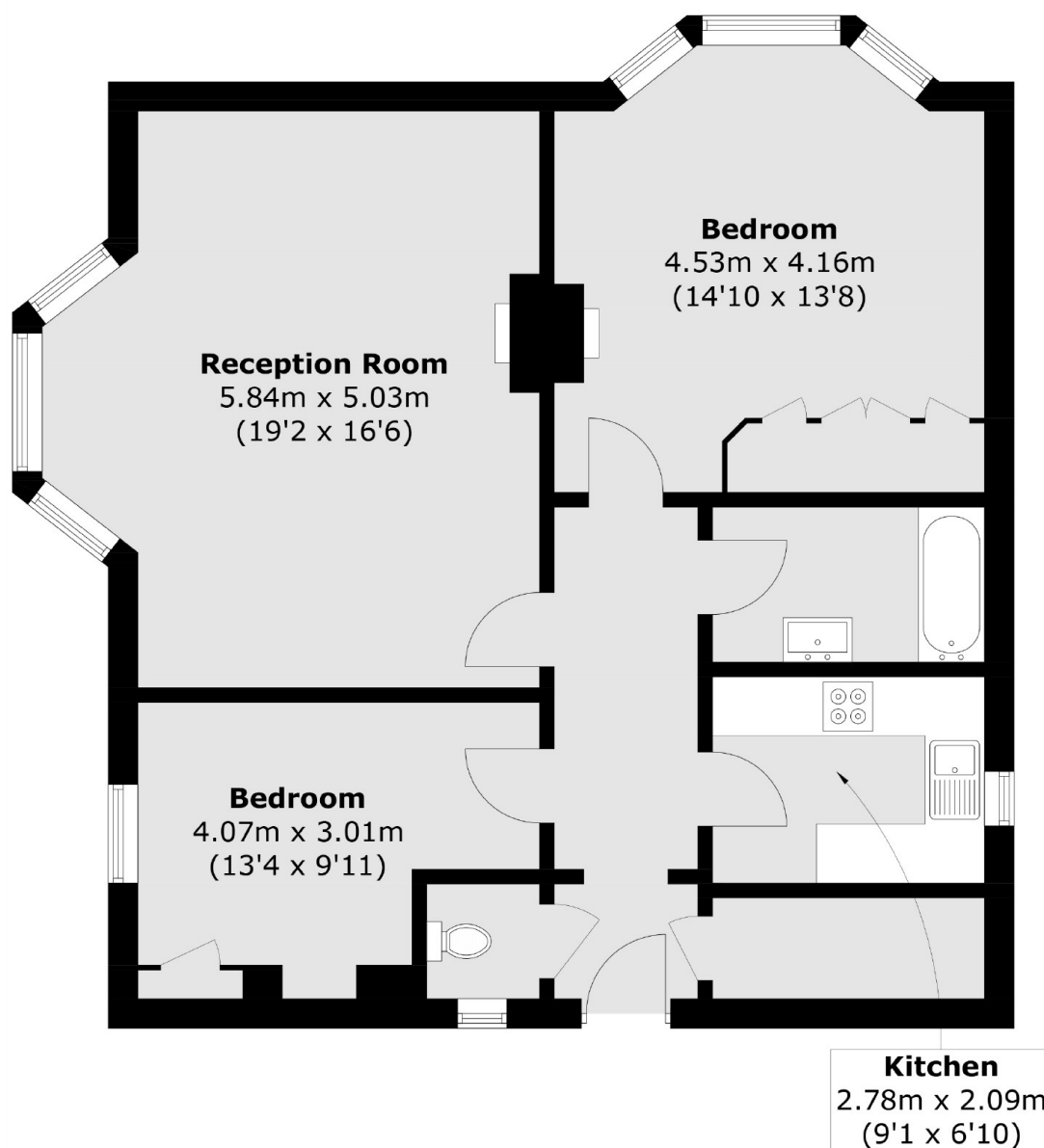
This spacious lower ground floor two bedroom apartment is set in an imposing detached period villa. The property has a large bay fronted living room, two double bedrooms, separate kitchen and a family bathroom. The property also benefits from communal grounds, unallocated parking and no onward chain.

Avenue South is a sought after tree lined road just 0.8 Miles from Surbiton High Street and mainline train station. The green spaces of Fish ponds park and Alexandra Park are on the doorstep and Ewell road with its cafés, restaurants and amenities are just 0.4 miles away.

### Features

- Imposing Period Apartment
- Two Double Bedrooms
- Unallocated Parking
- Sought After Road
- Spacious Apartment
- No Onward Chain

# Avenue South, Surbiton, KT5



Total area (approx.): 80.9 sq. m (870.8 sq. ft)