



Ellerton Road, KT6

£375,000

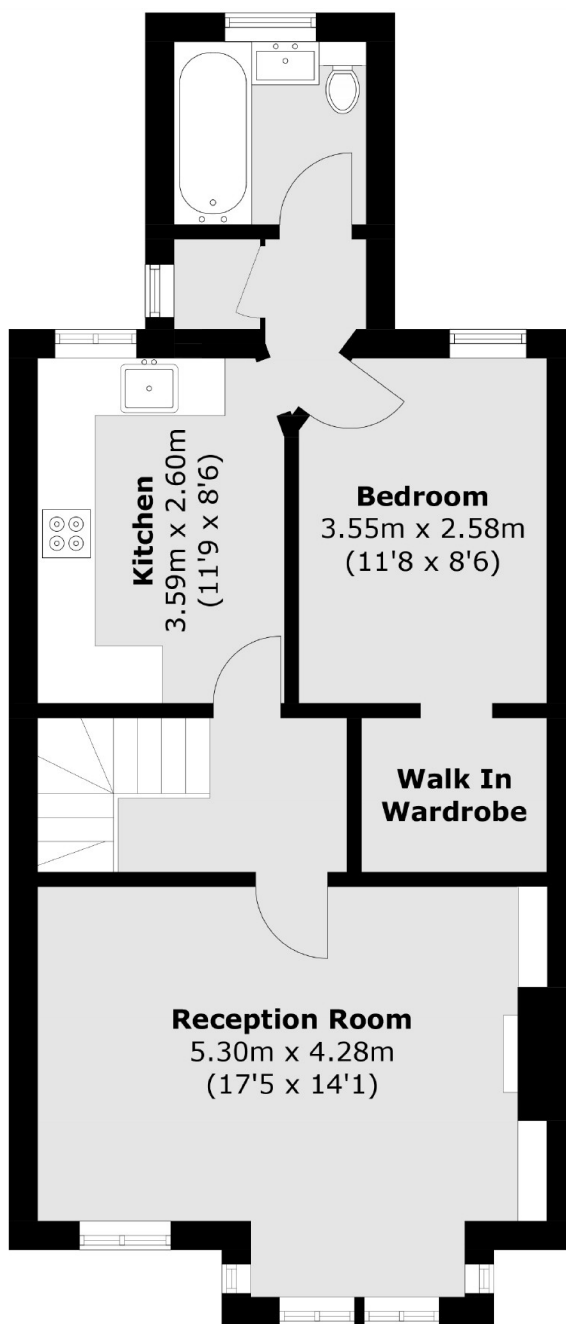
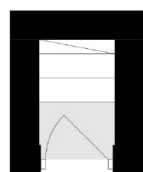
A spacious one/two bedroom apartment situated within an Edwardian bay fronted building, offering a private garden and a share of the freehold. This wonderful property is currently configured as a one bedroom with walk in wardrobe, large living/dining room, bathroom and private garden. It could easily be put back to the original two bedroom layout, there is also the option to loft convert to a duplex (STPP).

Ellerton Road is a peaceful residential road, approximately a mile away from both Surbiton and Tolworth town centres and train stations, with their quick links to London.

Features

- Period Building
- First Floor
- Private Garden
- No Onward Chain
- Share Of Freehold
- New Lease Upon Completion

Ellerton Road, Surbiton, KT6



Ground Floor

First Floor

Total area (approx.): 57.1 sq. m (614.6 sq. ft)

Dexters

Surbiton
2 Claremont Road
Surbiton
KT6 4QU
Sales
020 8390 3939

Energy Rating: D. We aim to make our particulars both accurate and reliable. However they are not guaranteed; nor do they form part of an offer or contract. If you require clarification on any points then please contact us, especially if you're traveling some distance to view. Please note that appliances and heating systems have not been tested and therefore no warranties can be given as to their good working order.

 **RICS** | Regulated
Estate Agent
and Letting Agent

dexters.co.uk