



## Richmond Grove, KT5

£649,950

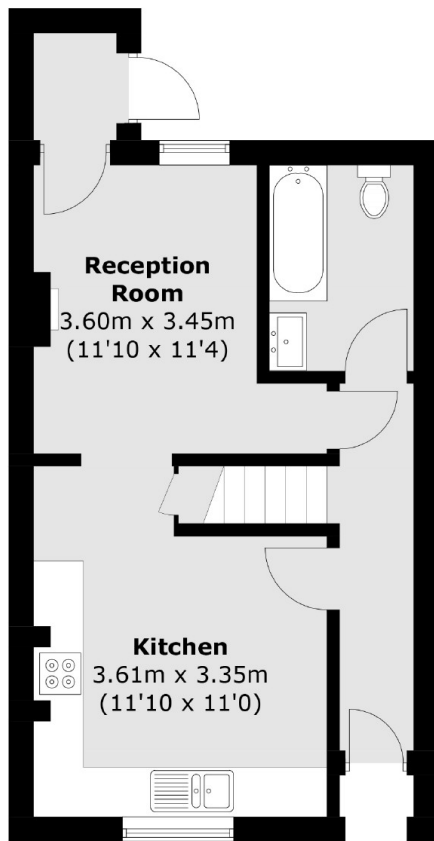
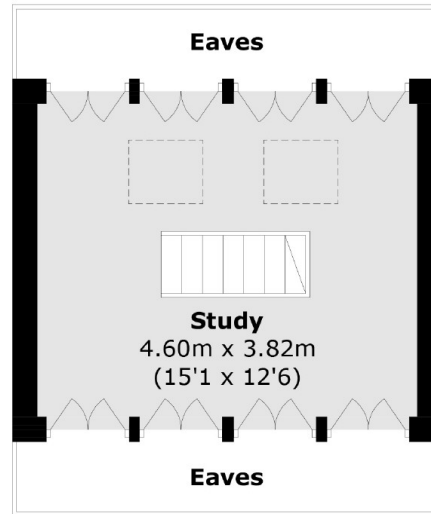
This charming Victorian home is arranged over three floors and includes two double bedrooms, a loft room with eaves storage (currently used as a study), and a private south-facing garden. Extension planning application number is: 23/00159/HOU.

Richmond Grove is off of Ewell Road, offering a variety of restaurants, bars and local shops. Surbiton town centre is approximately half a mile away, with the mainline train station and popular high street.

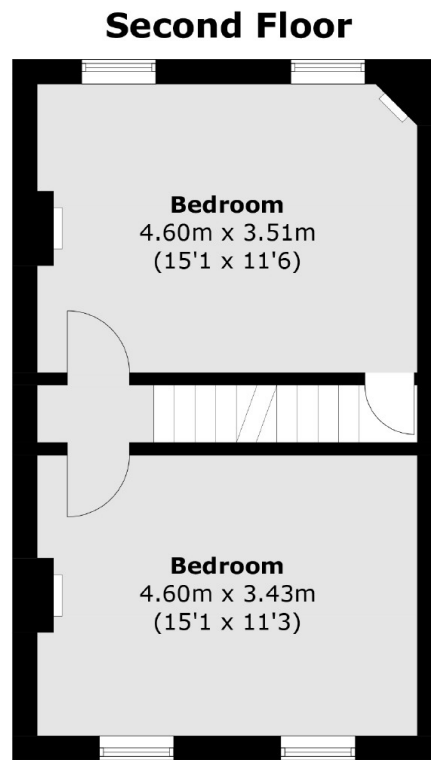
### Features

- Victorian
- Permission To Extend (Granted)
- Two Double Bedrooms
- Loft Room
- South-Facing Garden
- Great Location

# Richmond Grove, Surbiton, KT5



**Ground Floor**



**First Floor**

Total area (approx.): 92.3 sq. m (993.5 sq. ft)  
(Excluding Eaves)