



Lavender Mews, KT6

£2,250,000

An inspiring piece of architecture, this sunken detached home offers four bedrooms, four bathrooms and extensive living space. There are two private stone walled patios, a wrap around garden, parking and a reflection pool set within an internal court yard.

Lavender Mews is Located just off Maple Road and within walking distance of Surbiton station (17 mins to Waterloo) and the High street. There are some fantastic schools nearby and the local farmers market once a month.

Features

- Luxury New Build Home
- Four Double Bedrooms
- Detached
- Smart Technology
- Central Location
- Reflection Pool



Lavender Mews, KT6

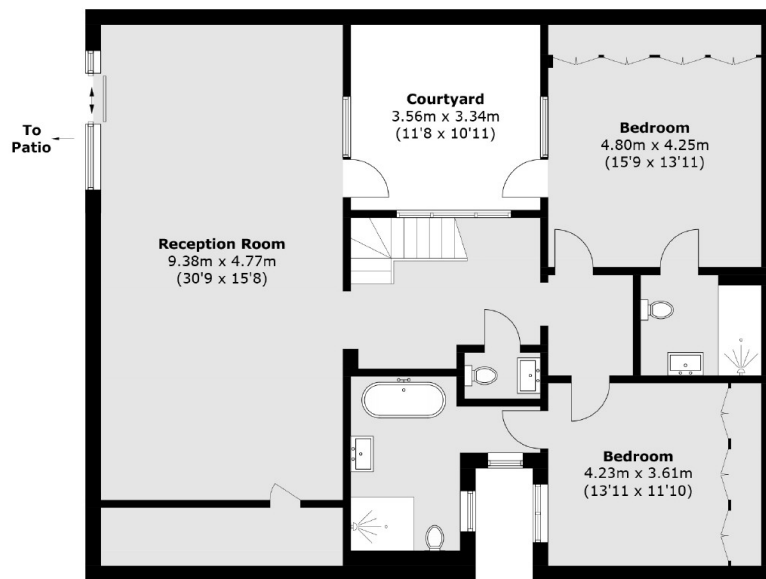
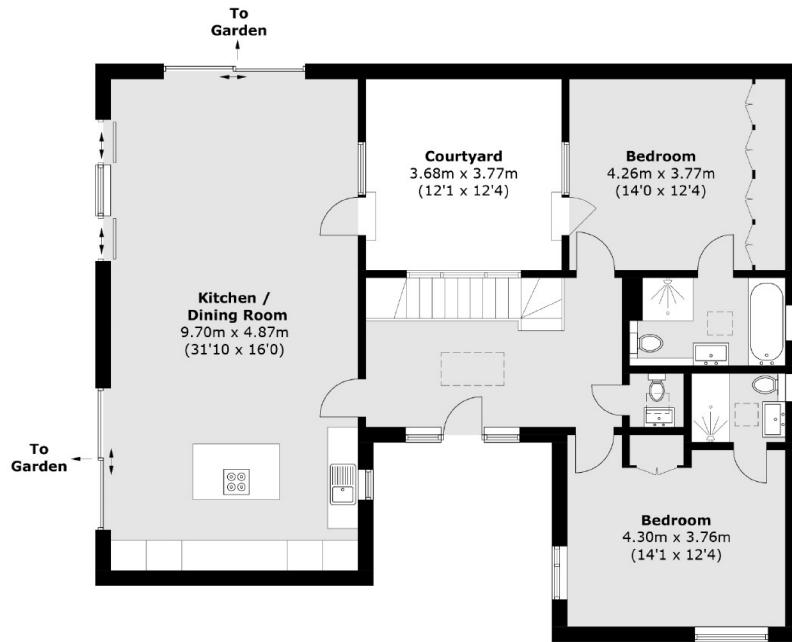
The front door leads in to a double height glazed wall entrance hall and a floating Oak staircase with a brushed aluminium handrail, giving access to both floors and a view of the reflection pool.

Set over two floors there are four double bedrooms and four fully tiles bathrooms, a large reception room offering smart features such as CONTROL 4 system for media and light, a full mechanical ventilation system and access to the patio.

There is a Hacker kitchen with Miele appliances and a Quooker tap and the property also has a 10 year NHBC, This house is the epitome of luxury living.



Lavender Mews, Surbiton, KT6



Total area (approx.): 226.7 sq. m (2,440.2 sq. ft)

Dexters

Surbiton
2 Claremont Road
Surbiton
KT6 4QU
Sales
020 8390 3939

Energy Rating: Tbc. We aim to make our particulars both accurate and reliable. However they are not guaranteed; nor do they form part of an offer or contract. If you require clarification on any points then please contact us, especially if you're traveling some distance to view. Please note that appliances and heating systems have not been tested and therefore no warranties can be given as to their good working order.

RICS | Regulated
Estate Agent
and Letting Agent

dexters.co.uk