



## Portsmouth Avenue, KT7

£724,995

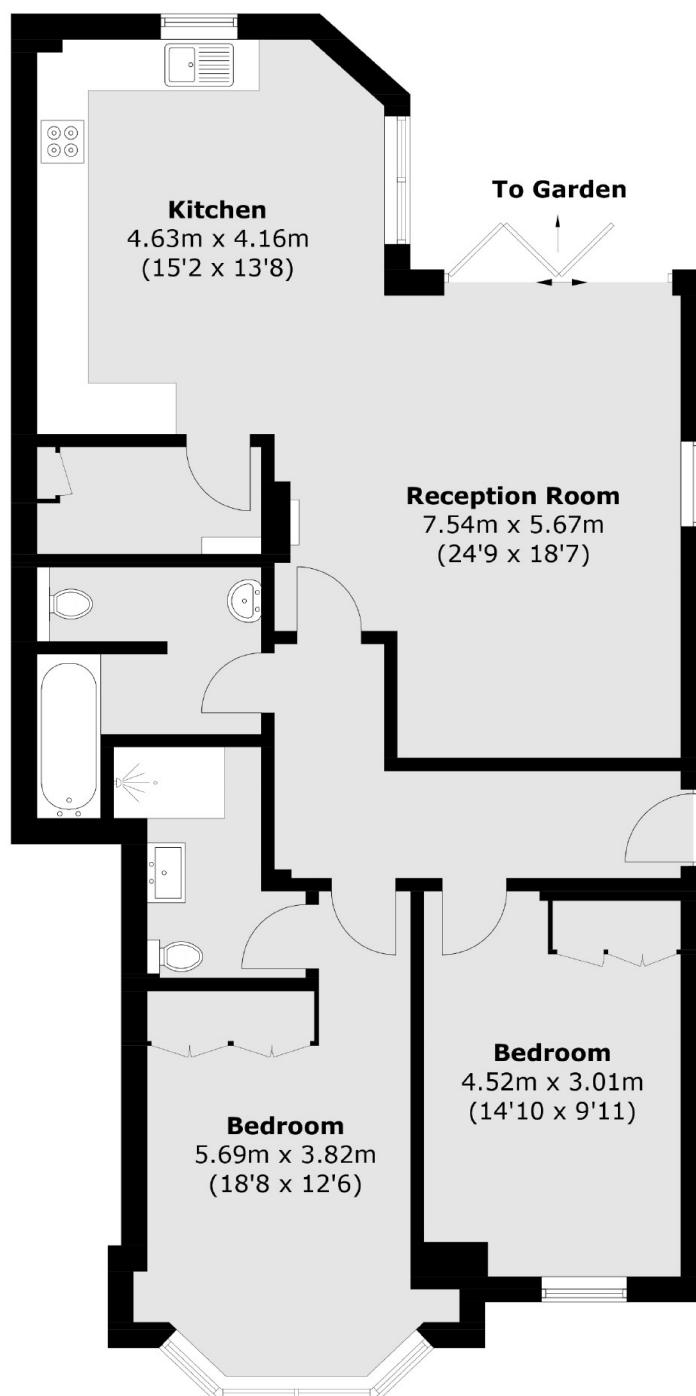
An immaculately finished, ground floor, two double bedroom apartment. This luxury property has two double bedrooms, two bathrooms, a large, bright open plan living/dining space and direct access to a private garden. It also offers allocated off street parking with electric charging station.

Portsmouth Avenue is approximately half a mile away from Thames Ditton train station and just over a mile from Surbiton High Street and the fast train to Waterloo. Thames Ditton Village is nearby as is the River Thames.

### Features

- Ground Floor Apartment
- Luxury Living
- Two Bedrooms
- Two Bathrooms
- Private Garden
- Allocated Parking

# Portsmouth Avenue, Thames Ditton, KT7



Total area (approx.): 95.8 sq. m (1,031.2 sq. ft)