



Uxbridge Road, KT1

£460,000

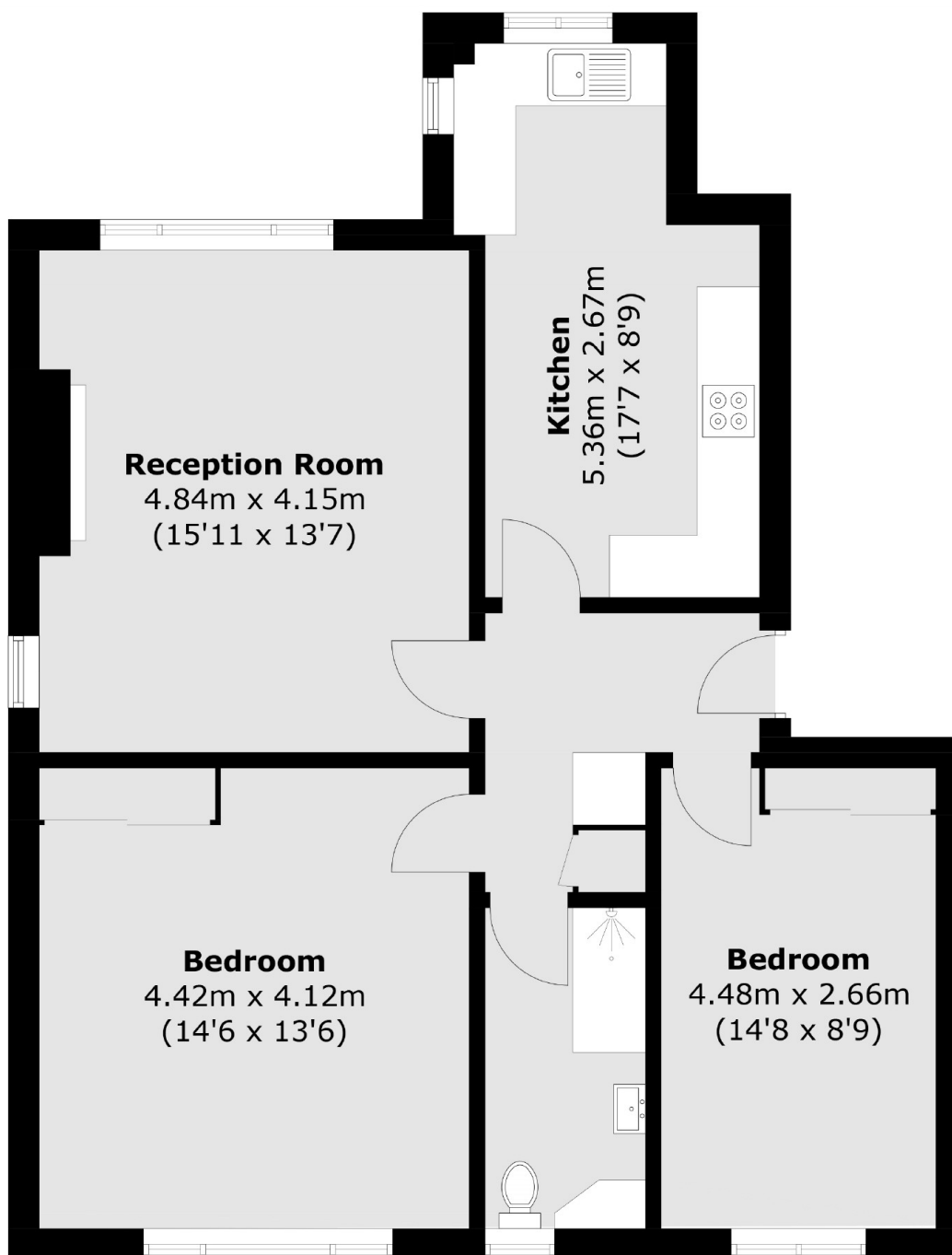
This ground floor apartment is offered to the market with modern living space and includes 2 bedrooms, an allocated garage and both front and rear communal gardens with access to parking.

Uxbridge Road is located right next to the River Thames and central Surbiton with everything you need on the doorstep, including the mainline train station (less than 20 mins to Waterloo), as well as bars and restaurants on the desirable Maple Road.

Features

- Ground Floor
- Refurbished Kitchen
- Garage
- River Road
- Central Location
- Two Bedrooms

Uxbridge Road, Kingston Upon Thames, KT1



Total area (approx.): 77.6 sq. m (835.3 sq. ft)