



## Rivermead, KT1

£530,000

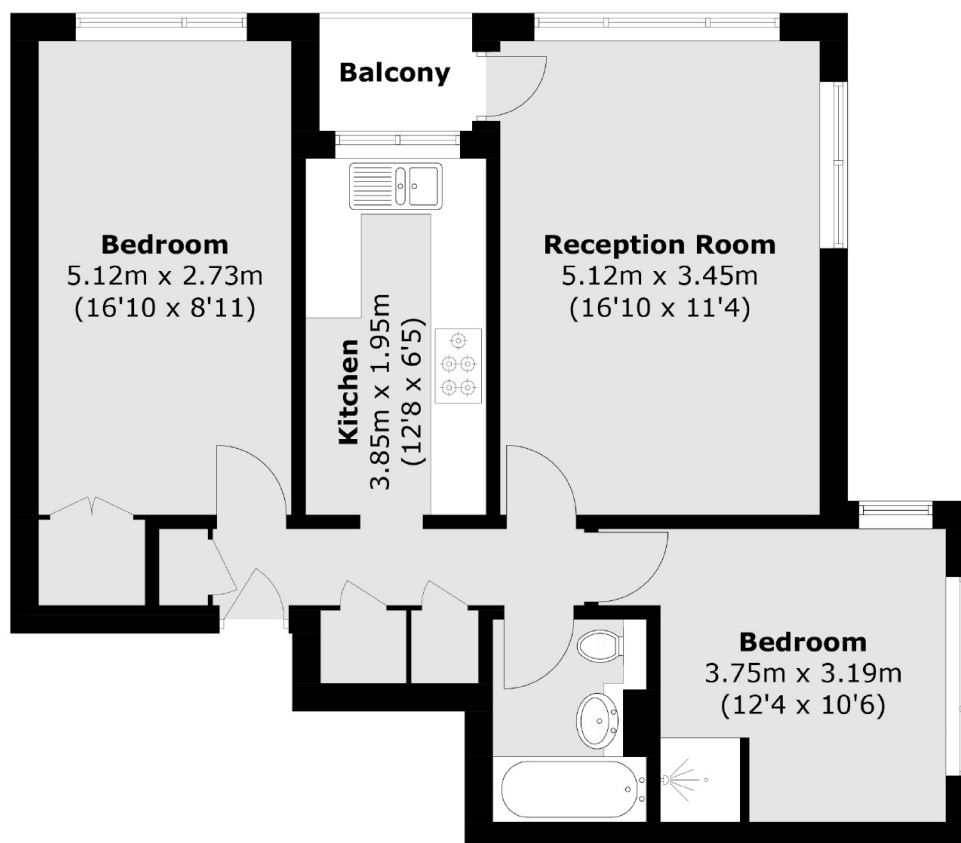
This second floor apartment is offered to the market with a large living/dining room with a modern kitchen, two double bedrooms and two bathrooms as well as a balcony. The block also has a lift and there is access to parking.

Uxbridge Road is located right next to the River Thames and central Surbiton with everything you need on the doorstep, including the mainline train station (less than 20 mins to Waterloo), as well as bars and restaurants on the desirable Maple Road.

### Features

- River Road
- Two Double Bedrooms
- Newly Refurbished
- Balcony
- Share of Freehold
- Central Location

# Rivermead, Kingston Upon Thames, KT1



Total area (approx.): 62.9 sq. m (677.0 sq. ft)  
Balcony: 2.0 sq. m (21.5 sq. ft)