



**Warwick Grove, KT5**

**£849,950**

**Dexters**



## Warwick Grove, KT5

A beautiful bay fronted, exposed brick, Victorian end of terrace house. Ideally located on a quiet cul de sac, this property is immaculate throughout, offering three bedrooms, extensive reception space and a secluded garden.

This property has been expertly refurbished. The ground floor offers a traditional tiled entrance hall and an open plan reception room with sash windows and an ornate fireplace leading on to a wonderful, sociable dining area.

The kitchen is to the rear with integrated appliances, a shaker matt kitchen, quartz work tops and an island. There are bi folding doors that open up completely and on the same level to allow access to the perfect walled garden.

Upstairs, there are three bedrooms, the master bedroom has a walk in wardrobe and a beautiful and cleverly designed bathroom with a free standing bath.

Warwick Grove is a peaceful residential road with easy access to Fishponds Park and just over half a mile away from Surbiton town centre, along with the train station and popular high street.

### Features

- Victorian Home
- End of Terrace
- Three Bedrooms
- Ground/First Floor Extended
- Immaculately Presented
- Quiet Location

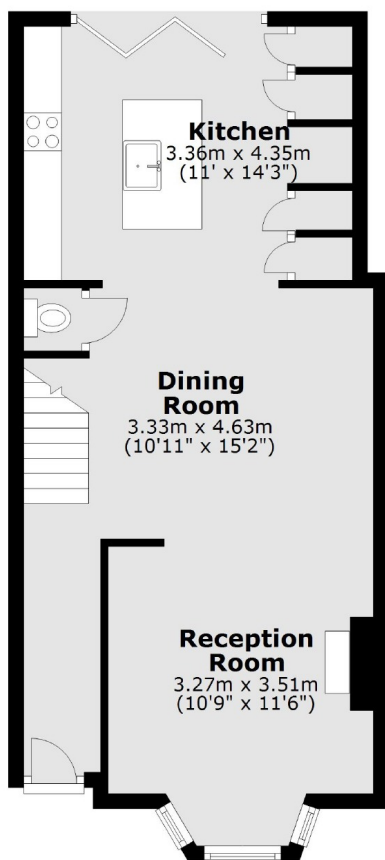




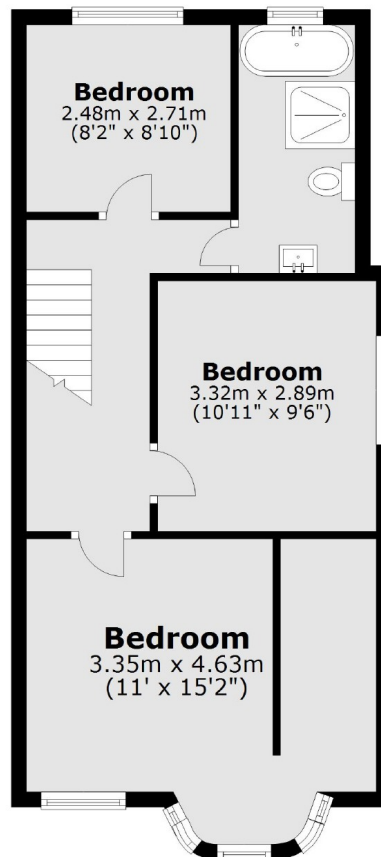


# Warwick Grove, Surbiton, KT5

**Ground Floor**



**First Floor**



Total area: approx. 94.2 sq. metres (1013.7 sq. feet)