



Grove Footpath, KT5

£699,950

Dexters



Grove Footpath, KT5

This stunning two bedroom period house has been beautifully refurbished throughout. Downstairs the property has reception room, a fully extended open plan kitchen/dining room with doors leading out the landscaped garden and a home office. Upstairs there are two good sized bedrooms, a modern bathroom and scope to extend into the loft (STPP).

This characterful property is the perfect mixture of old and new having been fully refurbished throughout whilst keeping some original period features throughout.

Downstairs there is a bay fronted reception room with a feature fireplace, to the rear of the property is a spacious and modern kitchen/dining room with concertina doors leading to the garden. Upstairs there are two double bedrooms and a contemporary and stylish bathroom.

Outside there is a private garden with decking area and lawn with a small home office, ideal for those that work at home.

Grove Footpath is a peaceful road tucked away in the centre of Surbiton, just off Cranes Park Avenue. Surbiton with its high street and Surbiton station with its fast links into London is just 0.6 miles away and Kingston upon Thames is within a mile.

Features

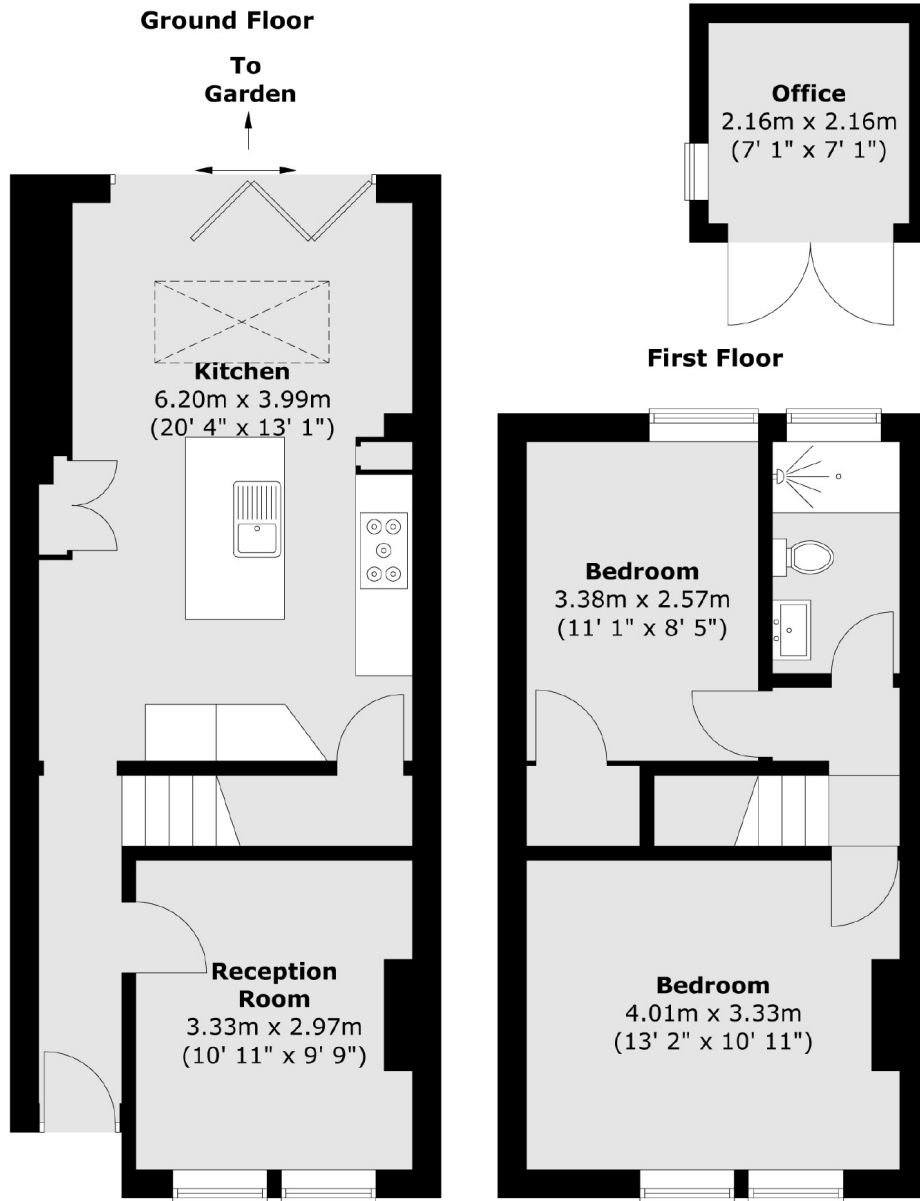
- Victorian Cottage
- Two Double Bedrooms
- Refurbished Throughout
- Peaceful Road
- Central Location
- Home Office







Grove Footpath, Surbiton, KT5



Total area (approx.) : 73.1 sq. m (787 sq. ft)
Total office area (approx.) : 4.6 sq. m (50 sq. ft)