



Arlington Road, KT6

£599,950

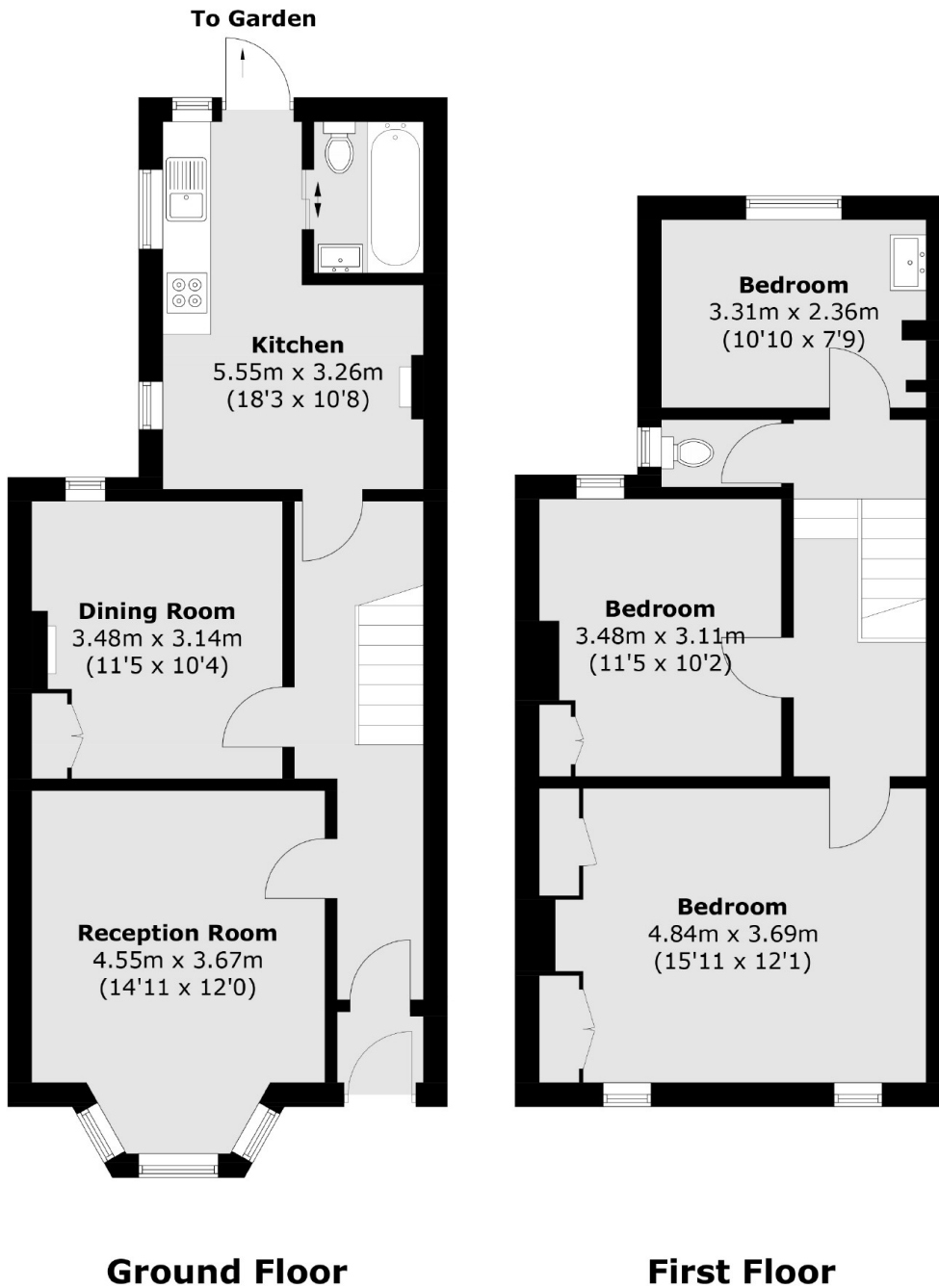
A three bedroom, Victorian property situated on a popular road in central Surbiton. This house has a bay fronted reception room, a dining room, kitchen and downstairs bathroom. Upstairs are three good size bedrooms and a cloak room. There is a courtyard garden to the rear and this property offers plenty of scope to re imagine and refurbish.

Arlington Road is in the heart of Surbiton with everything you need less than half a mile away, including the high street, farmers market, the mainline train station, with fast trains to Waterloo and the desirable Maple Road.

Features

- Victorian Property
- Three Bedrooms
- Central Location
- Ideal Refurbishment
- Scop To Extend (STPP)
- No Onward Chain

Arlington Road, Surbiton, KT6



Total area (approx.): 100.1 sq. m (1,077.5 sq. ft)