



## Adams Close, KT5

£419,950

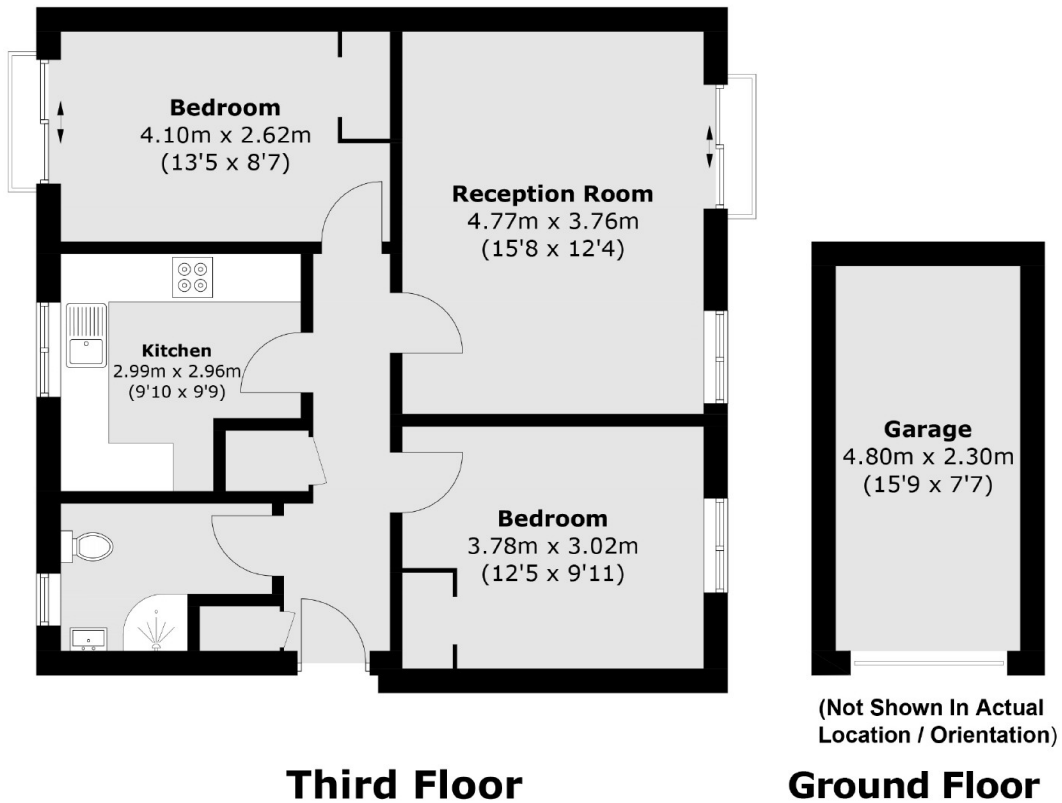
This is a well proportioned two bedroom apartment situated in a sought after area in Surbiton. This well presented flat offers an entrance hall with generous storage, a spacious reception room with room for dining, two double bedrooms, separate kitchen, and a modern bathroom. There is also the benefit of a garage and on street parking.

Surbiton town centre and mainline train station is within 0.8 miles as well as the shops, bars and amenities of Victoria Road. There are a variety of open green spaces within 500 yards and the A3 is 1 mile away.

### Features

- Top Floor
- Two Bedrooms
- Separate Kitchen
- Storage
- Garage
- Quiet Location

# Adams Close, Surbiton, KT5



Total area (approx.): 63.2 sq. m (680.3 sq. ft)  
Garage: 11.0 sq. m (118.4 sq. ft)