



Maple Road, KT6

£525,000

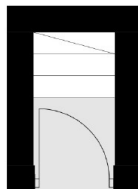
A beautifully presented, split level apartment, situated in open mature grounds in central Surbiton. This property offers two large double bedrooms, a bright and beautiful dining/living room, a separate integrated kitchen, a balcony and a loft with ample storage.

Exeter Court is on Maple Road, a highly desirable place to live, offering an array of shops, bars, restaurants and the famous farmers market. Surbiton train station is less than a third of a mile away with fast links to Waterloo.

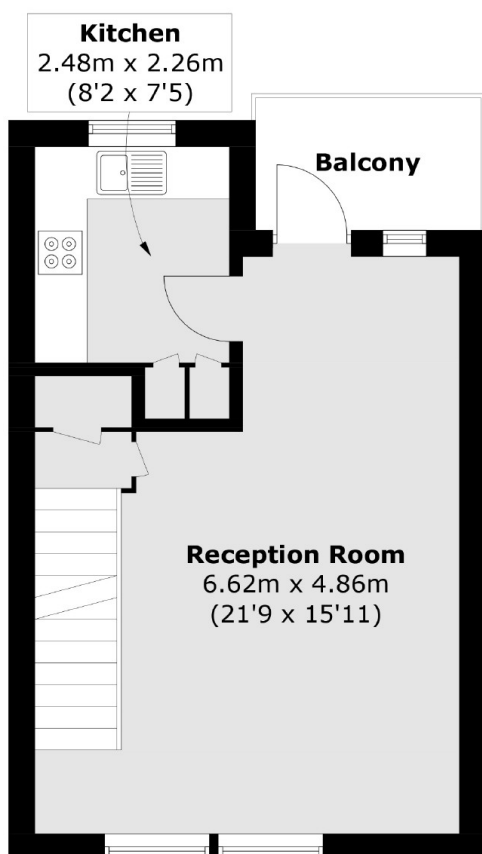
Features

- Maisonette
- Large Apartment
- Two Double Bedrooms
- Split Level
- Communal Grounds
- Great Location

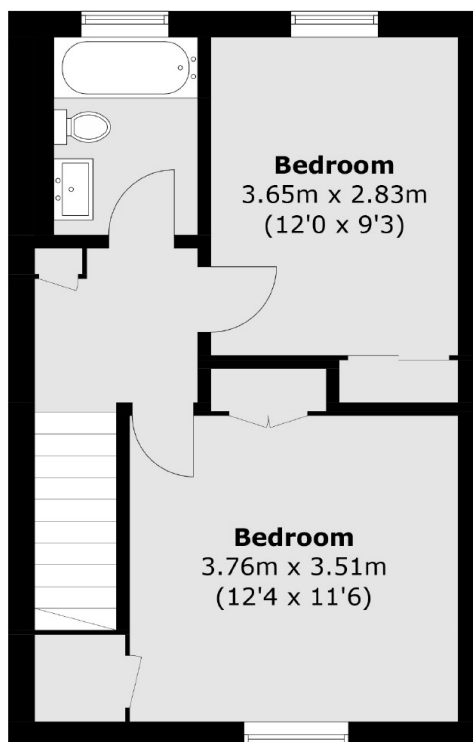
Maple Road, Surbiton, KT6



Ground Floor



First Floor



Second Floor

Total area (approx.): 74.8 sq. m (805.1 sq. ft)
Balcony: 3.9 sq. m (42.0 sq. ft)