



Brighton Road, KT6

£575,000

This lovely two bedroom house is peacefully tucked away from the road in a central location close to the River Thames. There are two reception rooms, a family shower room, modern eat in kitchen and two bedrooms. The property further benefits from off street parking, a pretty courtyard garden and no onward chain.

Located in the heart of Surbiton with the River Thames within 300ft. The trendy Maple Road and Surbiton high street are on your door step and Surbiton station with it's fast links into London Waterloo is within half a mile. Kingston town centre is located within a mile.

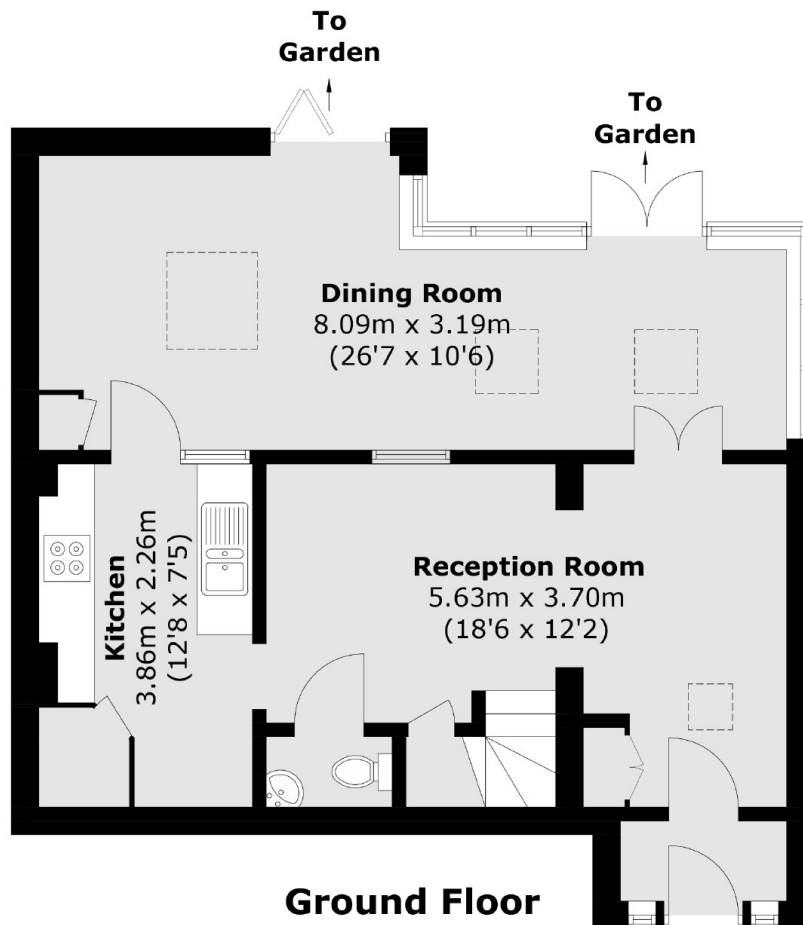
Features

- Period House
- River Road Location
- Spacious Living Area
- Off Street Parking
- Private Garden
- No Onward Chain

Brighton Road, Surbiton, KT6



First Floor



Ground Floor

Total area (approx.): 77.2 sq. m (831.0 sq. ft)