



St. Marys Road, KT6

£385,000

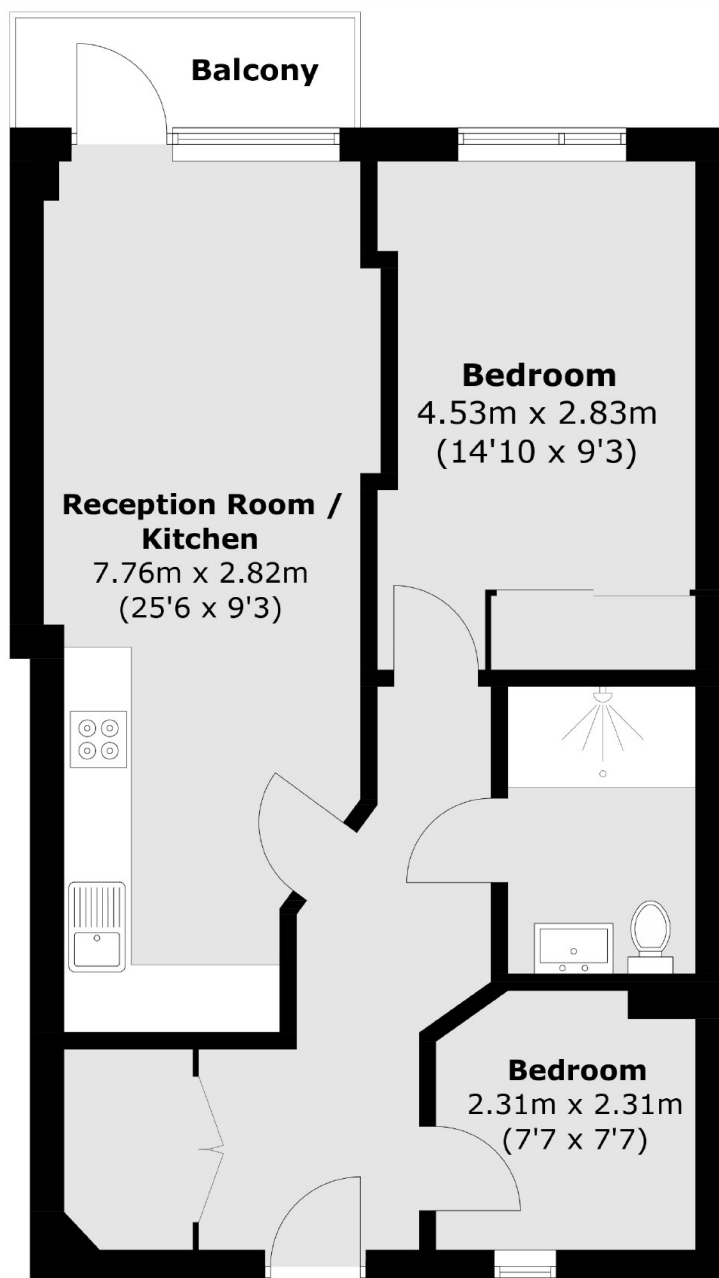
A bright two bedroom apartment situated in the centre of Surbiton in a modern development with underground parking for residents and visitors. This apartment offers an open plan reception and kitchen, two bedrooms, a bathroom and a private balcony.

Nestled in the heart of Surbiton, with the buzz of Surbiton high street and the convenience of the mainline train station and its fast train in to London Waterloo under half a mile away.

Features

- Open Plan Living
- Two Bedrooms
- Private Balcony
- Central Location
- Underground Parking
- Modern Finish

St. Marys Road, Surbiton, KT6



Total area (approx.): 55.5 sq. m (597.4 sq. ft)
Balcony area : 2.9 sq. m (31.2 sq. ft)