



Portsmouth Road, KT6

£1,595 Per calendar month

A modern apartment on the third floor of this popular development, overlooking the river. Accommodation includes two double bedrooms and off-street parking.

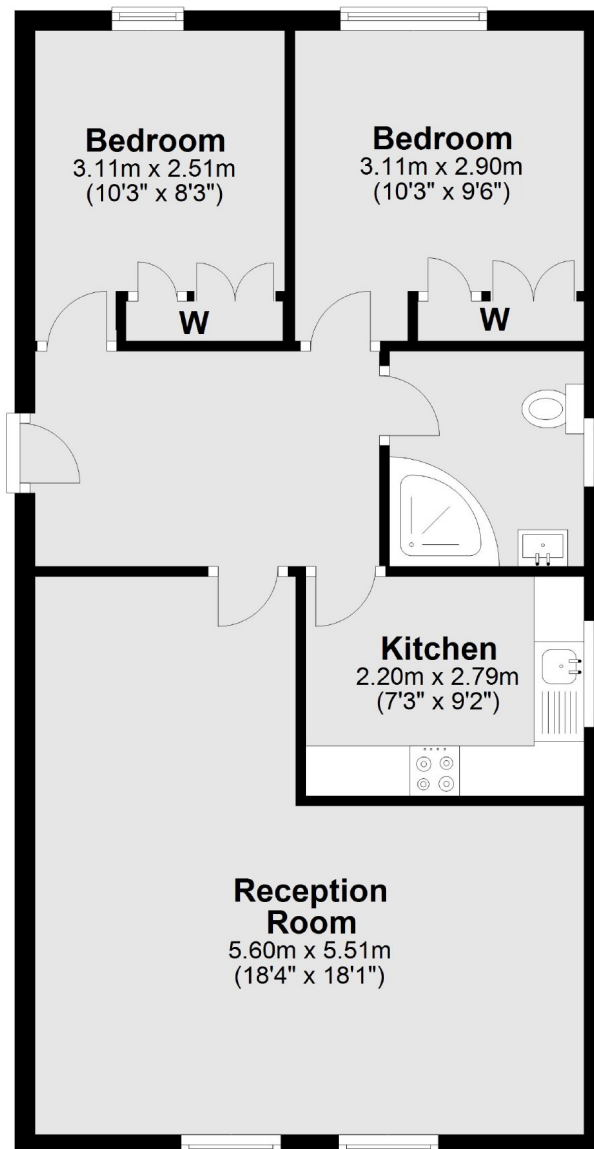
Portsmouth Road overlooks the idyllic River Thames and leads to Kingston town centre. Surbiton's mainline train station is less than half a mile away.

Features

Third Floor
Modern Throughout
Two Double Bedrooms
Off-Street Parking
River View
Fantastic Location

Portsmouth Road, Surbiton, KT6

Third Floor



Total area: approx. 61.0 sq. metres (656.6 sq. feet)

Contact

To arrange a viewing call our office on the number below or visit our website.



Energy Rating: . We aim to make our particulars both accurate and reliable. However they are not guaranteed; nor do they form part of an offer or contract. If you require clarification on any points then please contact us, especially if you're traveling some distance to view. Please note that appliances and heating systems have not been tested and therefore no warranties can be given as to their good working order.