



## The Byeways, KT5

£875,000

This charming semi detached family home offers two reception rooms, a garage, a kitchen, four bedrooms and a family bathroom, perfect for a growing family. There is also off street parking, a large rear garden and potential to develop and extend (STPP).

The Byeways is nestled in the family-friendly area of Berrylands with great schools nearby, conveniently less than half a mile away from Berrylands train station and approximately a mile away from Surbiton town centre.

### Features

- Semi-Detached
- Four Bedrooms
- Great Location
- Off Street Parking
- No Onward Chain
- Scope To Extend (STPP)



## The Byeways, KT5

On the ground floor this property offers two beautiful reception rooms, a garage, downstairs bathroom and a separate kitchen with direct access to the patio and garden area.

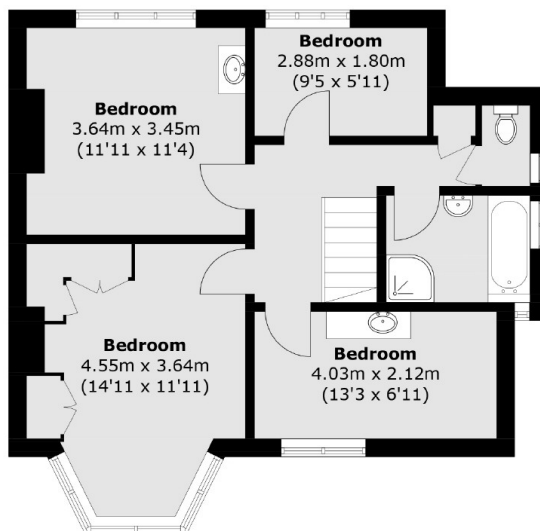
The first floor has four bedrooms and a family bathroom. The property has further potential to extend (STPP).

Externally, there is off street parking for up to two cars with side access of the property to the garden. To make sure you don't miss out on this stunning property, call us on 0208 390 3939 to book in a viewing.

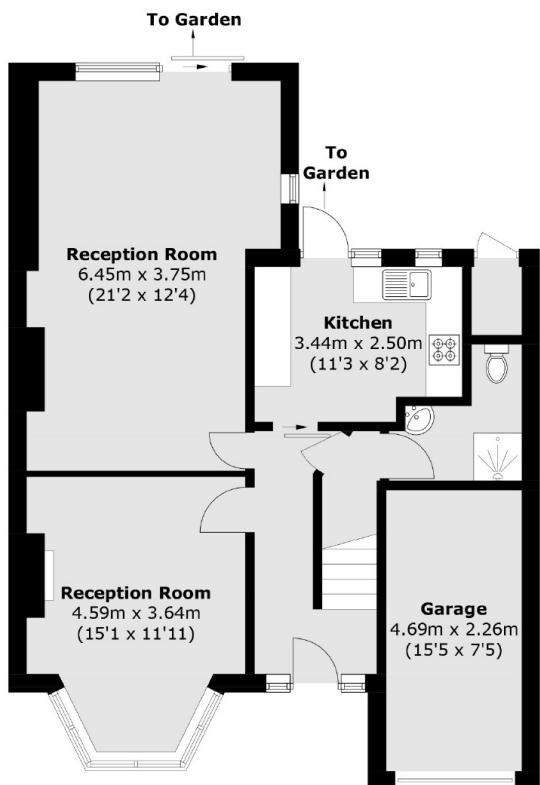




# The Byeways, Surbiton, KT5



**First Floor**



**Ground Floor**

Total area (approx.): 120.1 sq. m (1,292.8 sq. ft)  
Garage: 10.6 sq. m (114.1 sq. ft)