



## The Avenue, KT5

£325,000

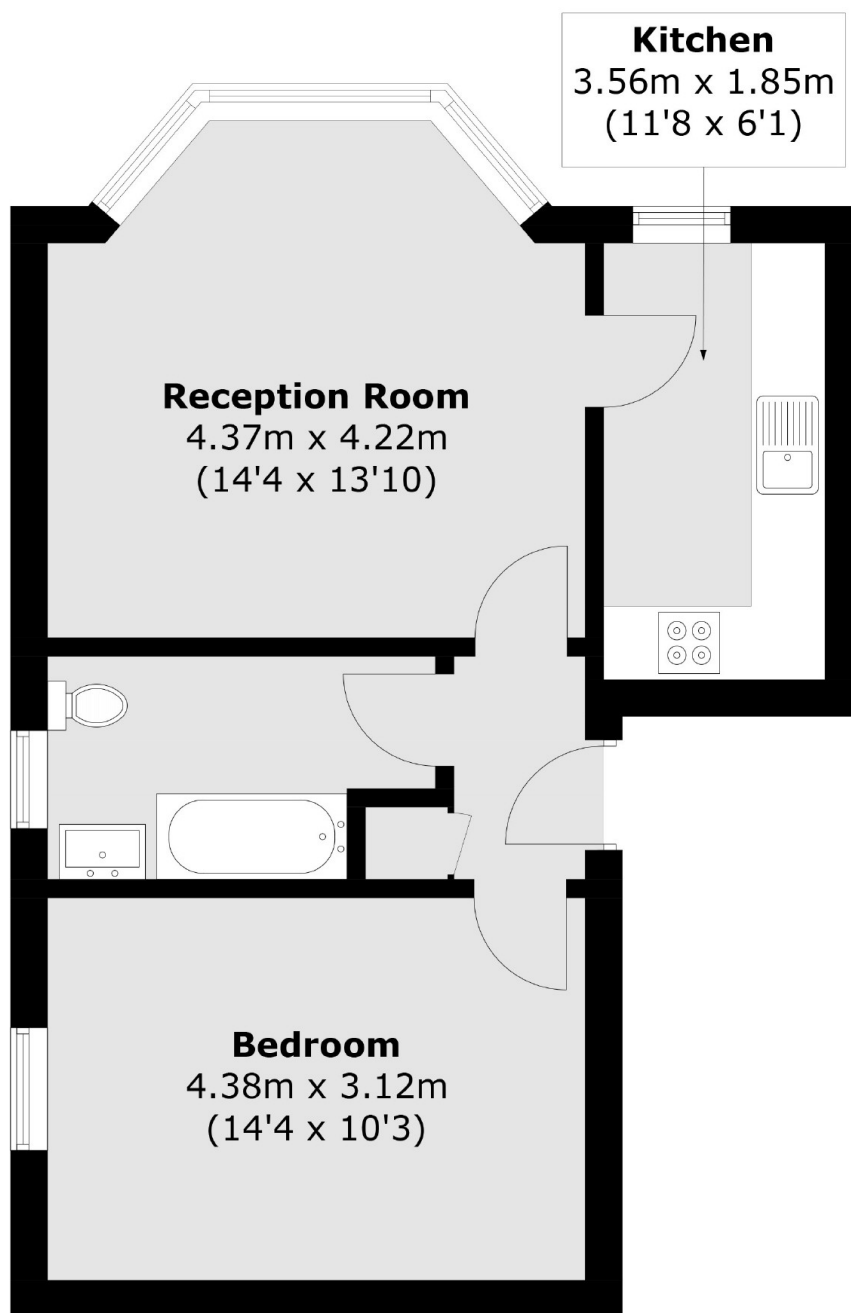
A beautiful one double bedroom apartment situated in a sought after road in Surbiton. This well presented flat offers a spacious bay fronted reception room, separate kitchen, one double bedroom and a bathroom.

Within 0.8 miles of Surbiton town centre and mainline train station, the shops, bars and amenities of Victoria Road are easily accessible. There are a variety of open green spaces within 500 yards and the A3 is 1 mile away.

### Features

- Edwardian Conversion
- Middle Floor Apartment
- One Double Bedroom
- Separate Kitchen
- Share of Freehold
- Free On Street Parking

# The Avenue, Surbiton, KT5



Total area (approx.): 46.8 sq. m (503.7 sq. ft)