



## Woodside Close, KT5

£629,950

This large semi-detached three bedroom family home has two spacious and bright reception rooms, a fitted kitchen, three bedrooms, a family bathroom and separate w/c. There is a detached garage next to the house, off street parking and a large garden. The property has scope to extend further (STPP) and no onward chain.

Woodside Close is a peaceful cul-de-sac with easy access to the A3. Both Tolworth and Malden Manor mainline train stations are conveniently just over half a mile away, with their efficient links to London.

### Features

- Semi Detached
- Three Bedrooms
- Off Street Parking
- Large Garden
- Potential To Extend (STPP)
- No Onward Chain





## Woodside Close, KT5

On the ground floor this property has a large bay fronted reception room, a second reception/dining room with direct access to the garden and a fitted kitchen.

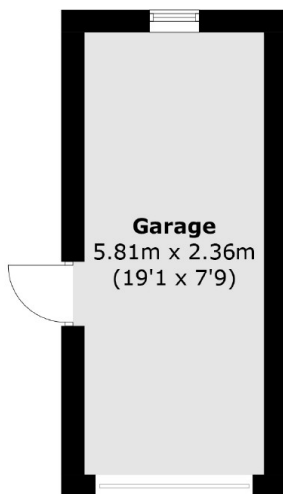
The first floor offers three good size bedrooms, a family bathroom and a separate w/c. This property could be extended in to the loft or the the rear (STPP).

Externally there is off street parking, a detached garage, a large rear garden and a storage shed. This property has lots of scope to develop further and create a larger family home (STPP).

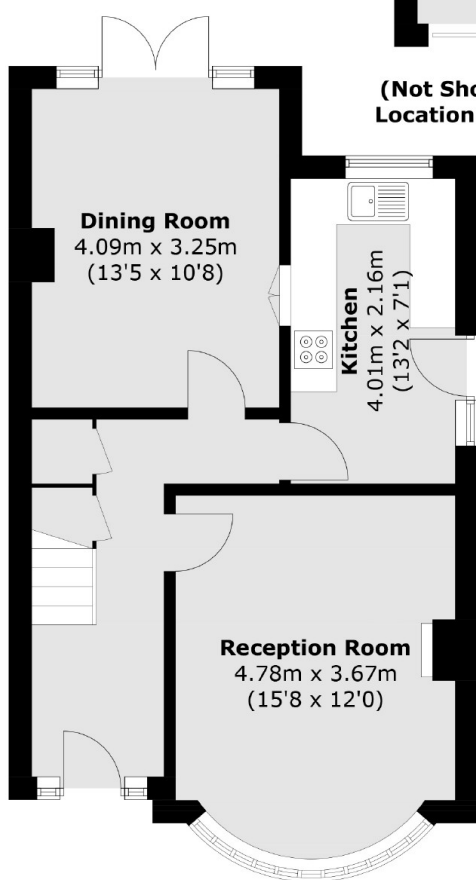




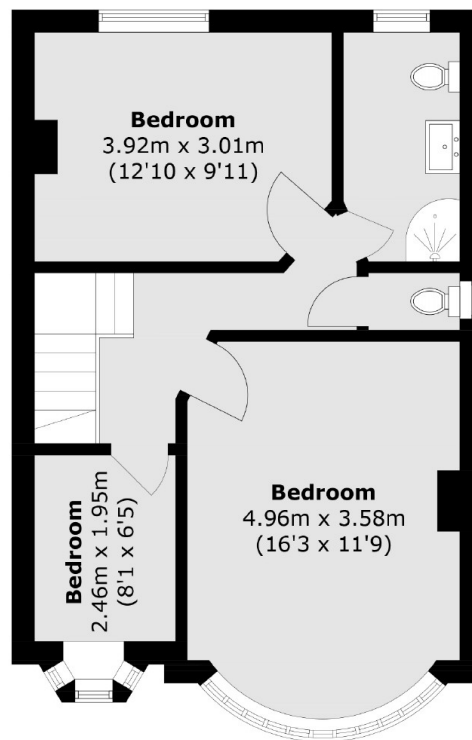
# Woodside Close, Surbiton, KT5



(Not Shown In Actual  
Location / Orientation)



**Ground Floor**



**First Floor**

Total area (approx.): 97.9 sq. m (1,053.8 sq. ft)  
Garage: 13.8 sq. m (148.5 sq. ft)