



Avenue Elmers, KT6

£349,950

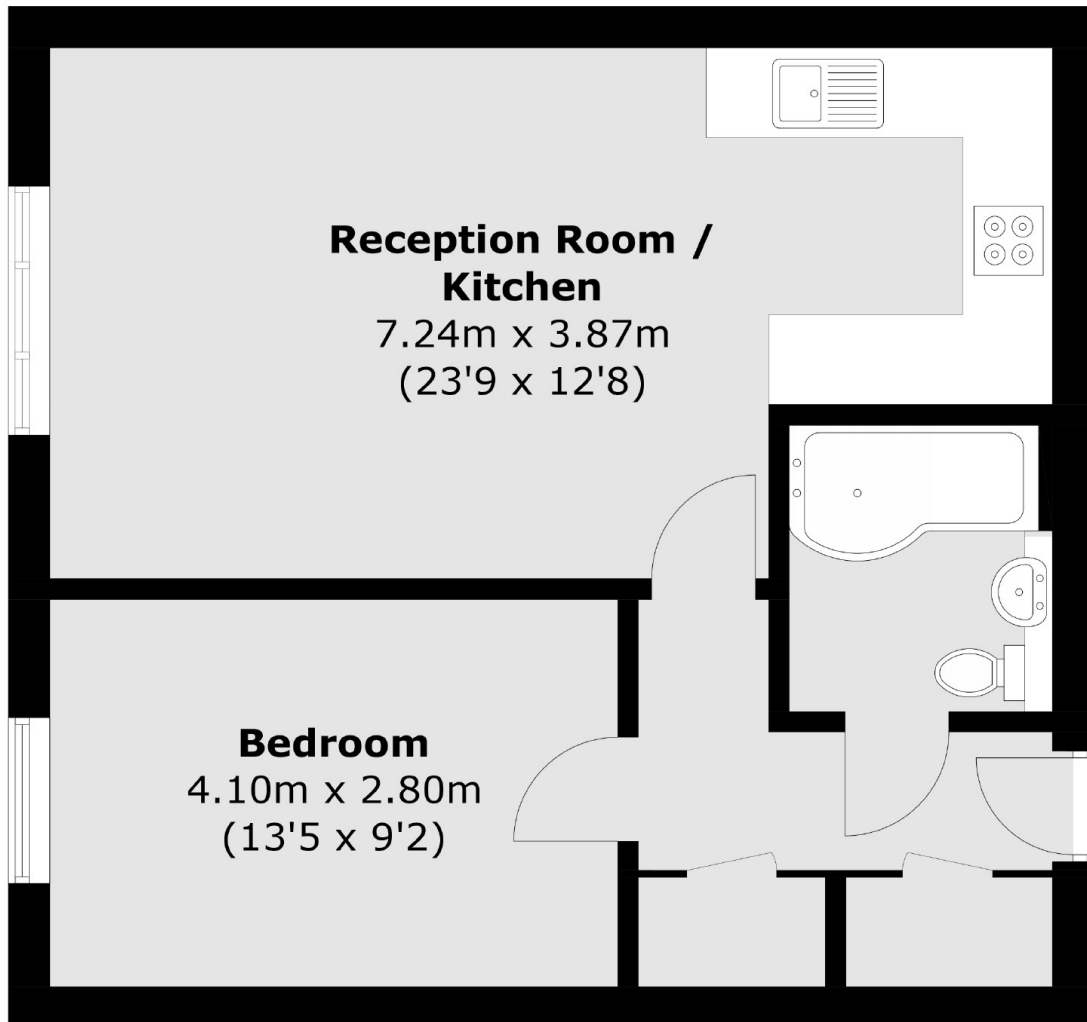
This spacious modern apartment has been designed in the Period style. There is an open plan kitchen/reception room, one double bedroom, communal gardens and an allocated parking space.

Avenue Elmers is a tree lined road with everything you need within half a mile, including the River Thames, the desirable Maple Road, Surbiton's popular high street and the mainline train station with it's fast links into London.

Features

- Mid Floor Apartment
- One Double Bedroom
- Communal Garden
- Off Street Parking
- Central Location
- Long Lease

Avenue Elmers, Surbiton, KT6



Total area (approx.): 49.3 sq. m (530.7 sq. ft)