



Surbiton Crescent, KT1

£375,000

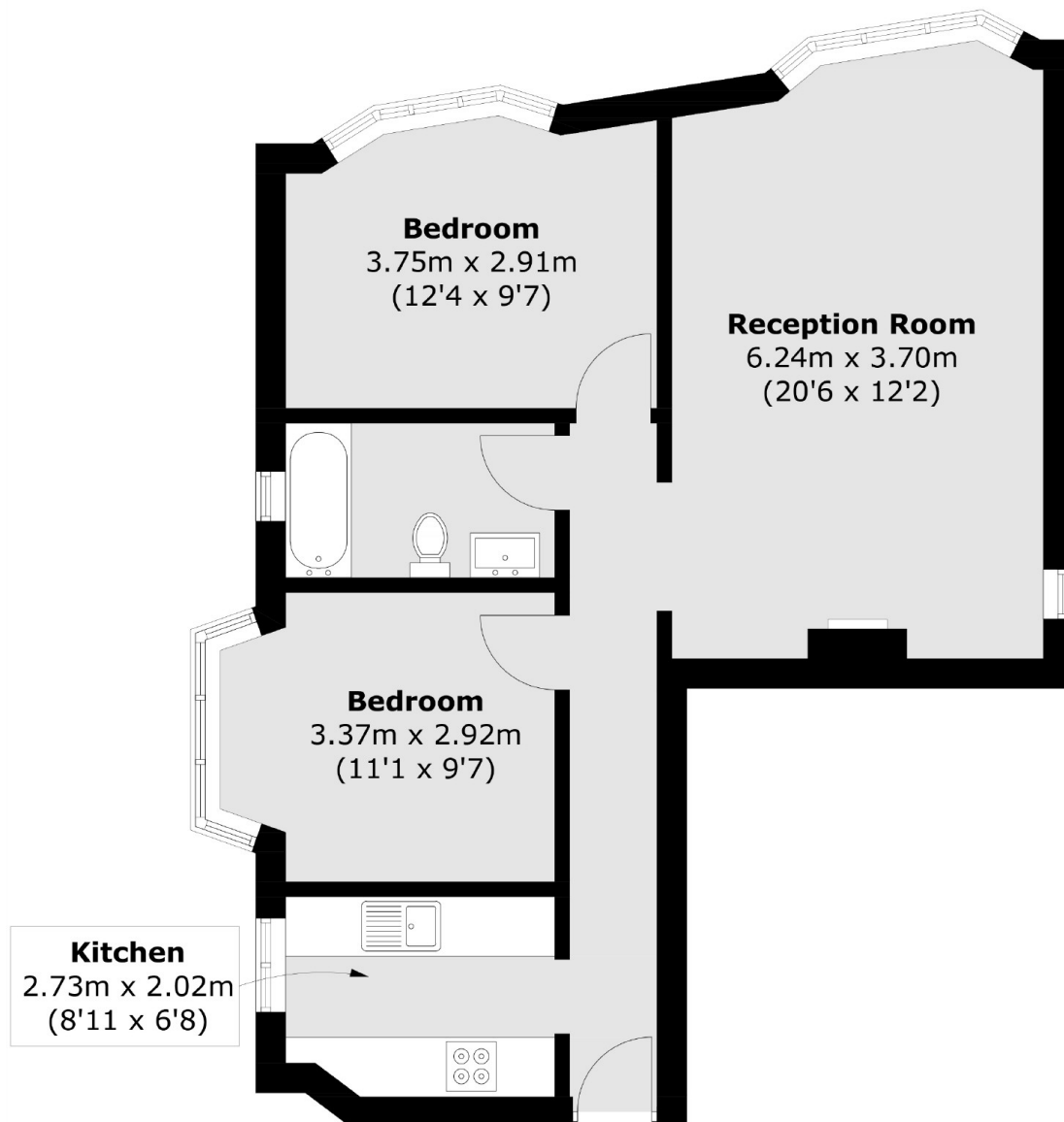
Offers in excess of 375,000. This beautiful ground floor apartment, located in this attractive characterful block offers two double bedrooms, one bathroom, a reception room and a separate kitchen. This property also benefits from no onward chain.

Effingham Lodge is conveniently located in Surbiton Crescent, under half a mile from the River Thames, Surbiton Station and Kingston town centre with its array of shops and restaurants.

Features

- Two Double Bedrooms
- Ground Floor
- New Lease Upon Completion
- Central Location
- Good Condition
- No Onward chain

Surbiton Crescent, Kingston Upon Thames, KT1



Total area (approx.): 60.4 sq. m (650.1 sq. ft)