



Surbiton Crescent, KT1

£399,950

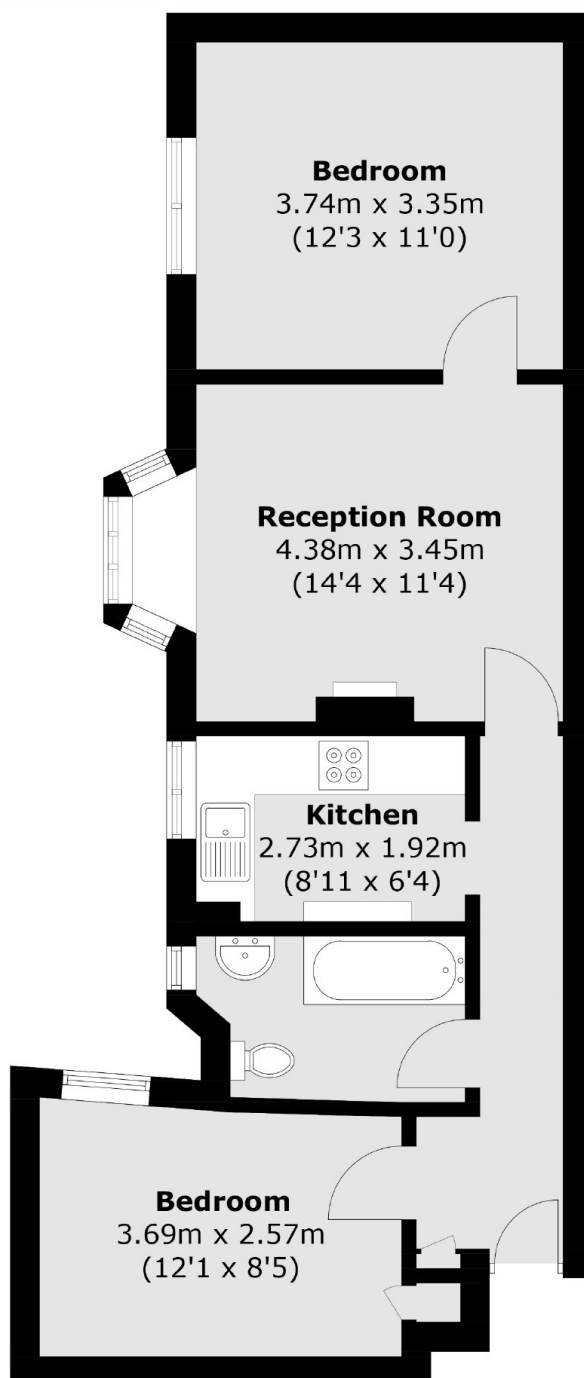
A delightful two double bedroom ground floor apartment forming part of this attractive characterful block. The property has been refurbished throughout, has no onward chain, it's own private garage and will have a new lease on completion.

Effingham Lodge is conveniently located in Surbiton Crescent, under half a mile from the River Thames, Surbiton Station and Kingston town centre with its array of shops and restaurants.

Features

- Two Double Bedrooms
- Newly Refurbished
- Garage
- Great Location
- No Onward Chain
- New Lease

Surbiton Crescent, Kingston Upon Thames, KT1



Total area (approx.): 53.9 sq. m (580.2 sq. ft)