



Hamilton Avenue, KT6

£725,000

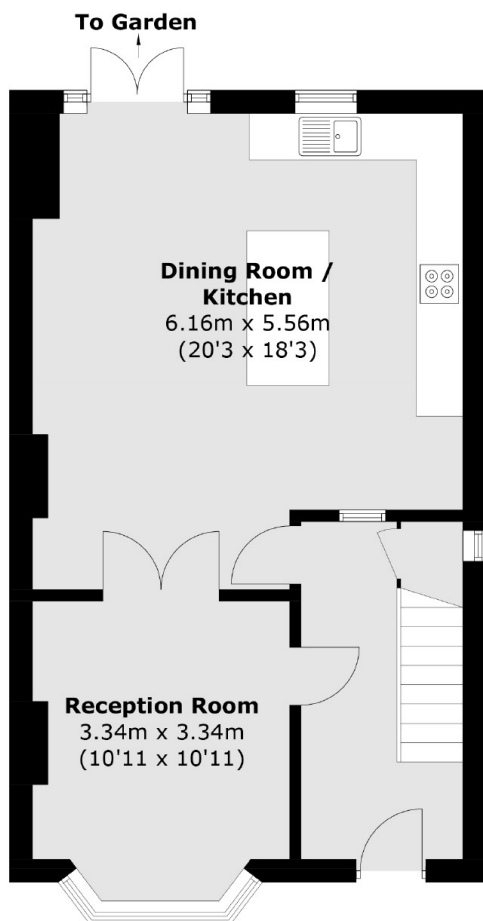
This charming semi-detached family home offers a perfect blend of modern recently refurbished stylish open plan kitchen/dining room, bay fronted reception room, three bedrooms and a family bathroom. A large stunning landscaped garden with shed storage, off street parking and potential to extend into the loft (STPP).

Located in a quiet residential road with excellent local amenities and easy access to the A3, Tolworth train station and Tolworth Broadway. Surbiton town centre is within a mile.

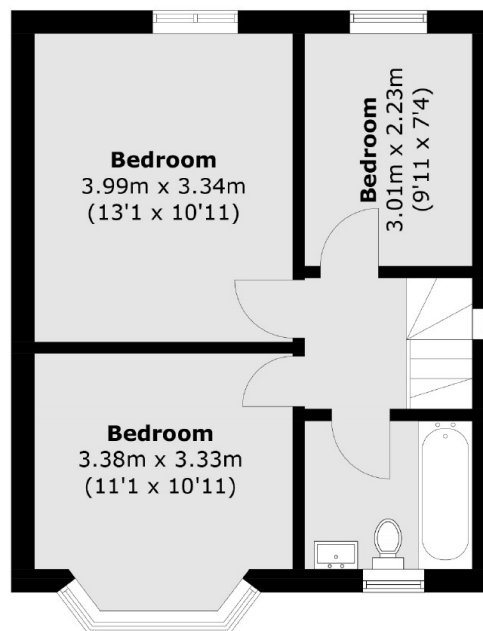
Features

- Semi-Detached
- Two Reception Rooms
- Three Bedrooms
- Large Private Garden
- Off-Street Parking
- Great Location

Hamilton Avenue, Surbiton, KT6



Ground Floor



First Floor

Total area (approx.): 95.3 sq. m (1,025.8 sq. ft)