



Hamilton Avenue, KT6

£725,000

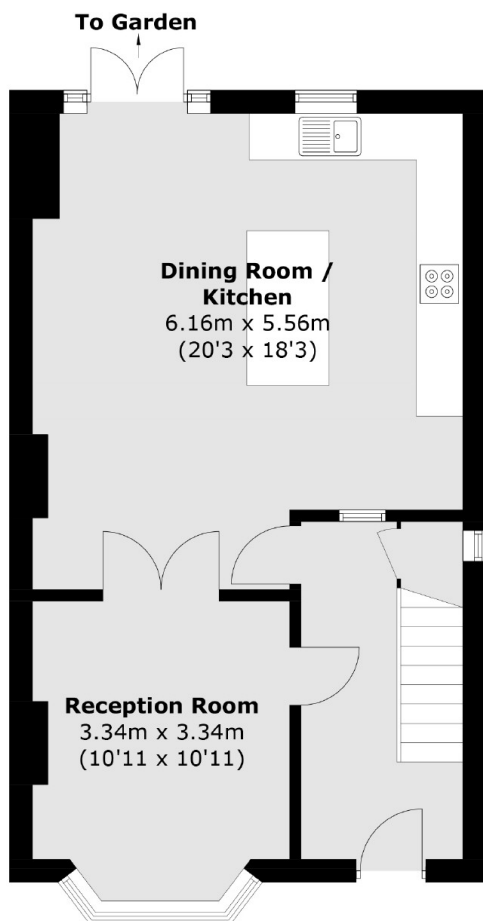
This semi-detached family home has a bay fronted reception room, a stylish open plan kitchen/dining room, three bedrooms and a family bathroom. There is also a large pretty garden with storage shed, off-street parking and potential to extend into the loft (STPP).

Located in a quiet residential road with excellent local amenities and easy access to the A3, Tolworth train station and Tolworth Broadway. Surbiton town centre is within a mile.

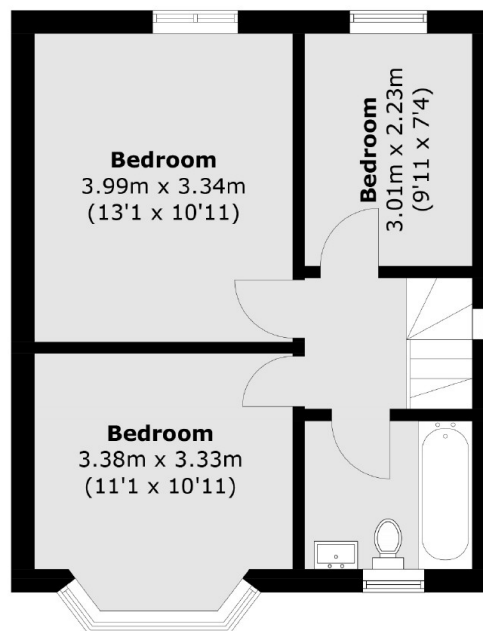
Features

- Semi-Detached
- Two Reception Rooms
- Three Bedrooms
- Large Private Garden
- Off-Street Parking
- Great Location

Hamilton Avenue, Surbiton, KT6



Ground Floor



First Floor

Total area (approx.): 95.3 sq. m (1,025.8 sq. ft)