



**Ravenscar Road, KT6**

**£715,000**

**Dexters**





## Ravenscar Road, KT6

A beautiful Victorian family home offering two receptions rooms, three bedrooms, two bathrooms and an open plan kitchen/dining area and a large garden with side access. This property has the scope to extend into the loft (STPP).

On the ground floor there is a bathroom with a shower, a beautiful open plan kitchen and dining area which leads into the large secluded garden - the perfect space for a family to get together.

On the first floor there are three spacious bedrooms with fitted wardrobes and plenty of storage space throughout. There is also a family bathroom.

Outside, the garden has a patio area leading into the private and secluded lawn, with side access also available.

Ravenscar Road is a peaceful residential road, approximately a mile away from both Surbiton and Tolworth mainline train stations with their efficient links to London Waterloo. Also, in close proximity to fantastic local schools.

### Features

- End of Terrace
- Period/Victorian
- Three Bedrooms
- Open Plan
- Two Bathrooms
- Two Receptions







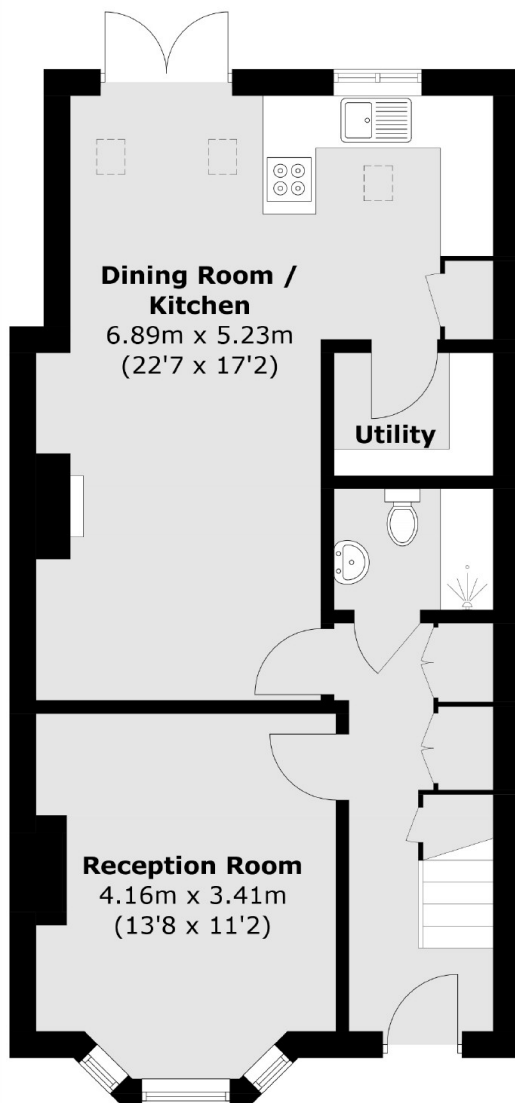




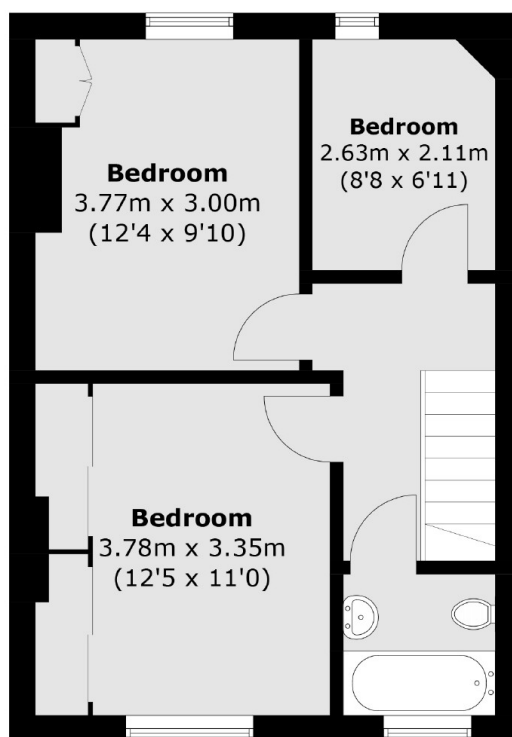




# Ravenscar Road, Surbiton, KT6



**Ground Floor**



**First Floor**

Total area (approx.): 95.9 sq. m (1,032.3 sq. ft)