

**St. Marys Road, KT6**

**£829,950**

**Dexters**



## St. Marys Road, KT6

Air conditioned luxury penthouse, with wrap around roof terrace, two large double bedrooms and two bathrooms, situated in the very centre of Surbiton in a modern development with under ground parking for residents and visitors.

This property offers nearly 1000sq feet and a stunning roof terrace with extensive views over the town.

There is a large living/dining room with dual access out to the terrace, a separate modern kitchen with integrated appliances and two bright and generous double bedrooms. The master bedroom has an en-suite shower room and there is a further bathroom, both bedrooms also offer plenty of built in storage.

This modern development is highly sought after, it offers lift access, concierge service and is ideally situated for Surbiton train station, with fast trains to Waterloo, as well as the local restaurants, bars and farmers market.

Surbiton Plaza is nestled in the heart of Surbiton, with the buzz of Surbiton high street and the convenience of the mainline train station and its fast train in to London Waterloo under half a mile away.

### Features

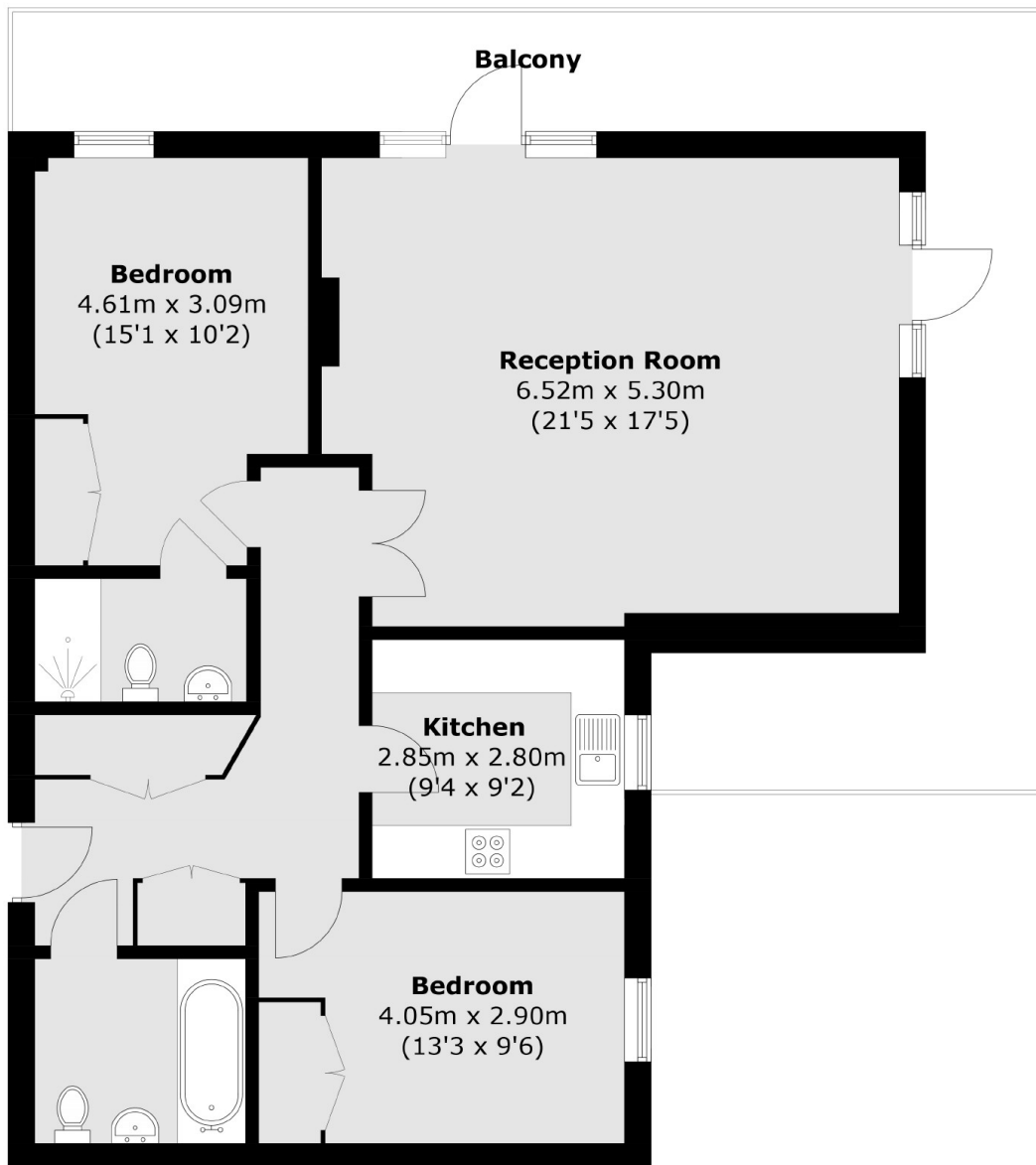
- Luxury Penthouse
- Two Double Bedrooms
- Underground Parking
- Central Location
- En Suite Bathroom
- Private Terrace







# St. Marys Road, Surbiton, KT6



Total area (approx.): 91.1 sq. m (980.6 sq. ft)  
Balcony (approx.): 30.6 sq. m (329.4 sq. ft)