



## Cumbræ Gardens, KT6

£850,000

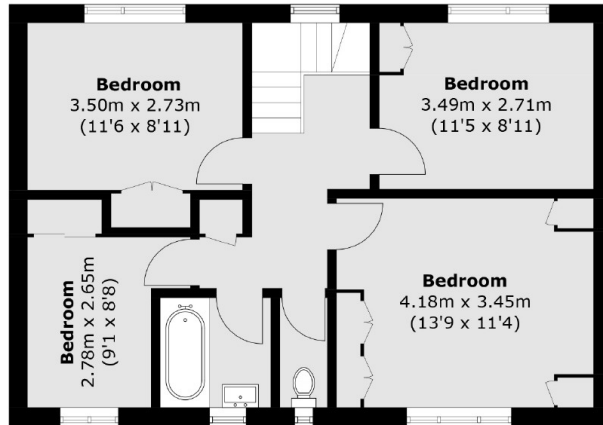
A spacious, detached, two reception, four bedroom, family home. This property is ideally located in Long Ditton, close to Hinchley Wood school. It sits on a generous plot with the potential to extend, a garage that could be converted (STPP), plenty of off street parking and a lovely lawned rear garden.

Cumbræ Gardens is a quiet cul-de-sac in Long Ditton, approximately a mile away from Surbiton town centre which has the mainline train station, with fast train to Waterloo, shops, bars and restaurants. The lovely villages of Hinchley Wood and Thames Ditton are also near by, as is the river Thames.

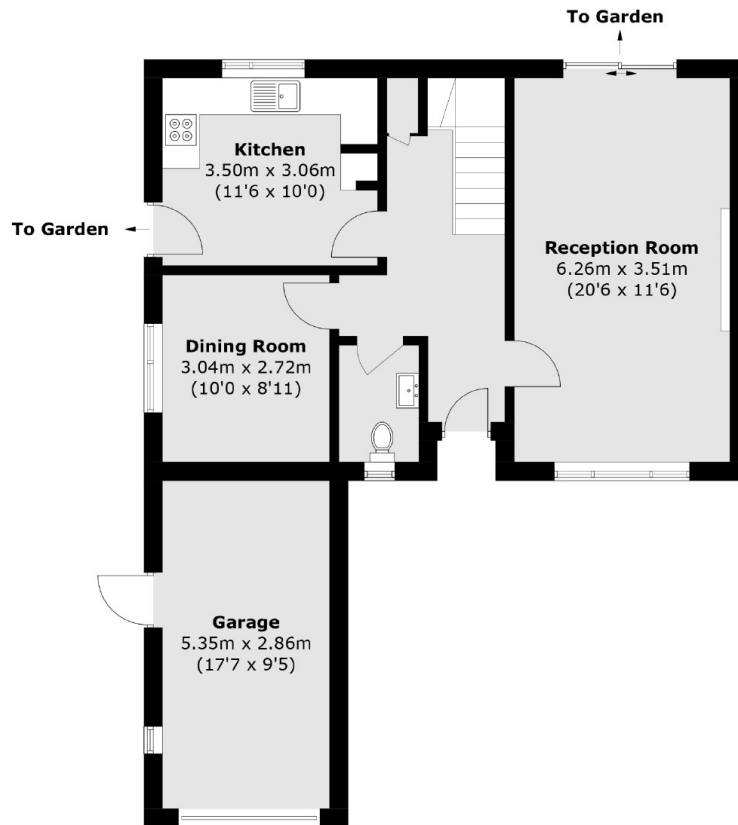
### Features

- Detached Property
- Four Bedrooms
- Potential to extend (STPP)
- Scope For Modernisation
- Off Street Parking
- Quiet Location

# Cumbræ Gardens, Surbiton, KT6



**First Floor**



**Ground Floor**

Total area (approx.): 115.0 sq. m (1,237.9 sq. ft)  
Garage: 14.7 sq. m (158.2 sq. ft)