



Surbiton Hill Park, KT5

£325,000

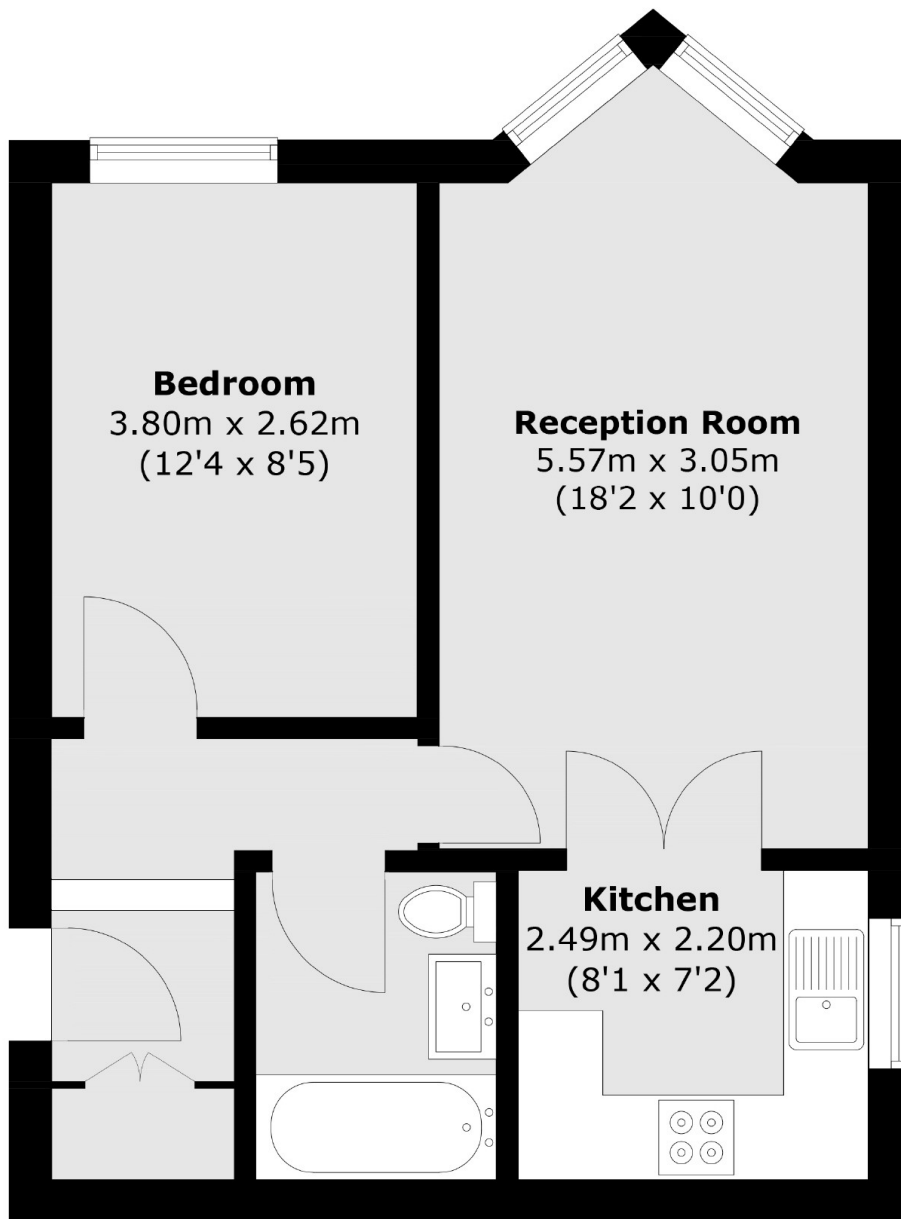
This ground floor apartment is peacefully nestled in a secure gated development with its own private entrance and has a spacious reception room, one double bedroom, a communal garden and allocated parking.

Surbiton Hill Park is approximately half a mile away from Surbiton town centre, with the mainline train station and a vast selection of local shops, excellent restaurants and gastro pubs.

Features

- One Double Bedroom
- Gated Development
- Communal Garden
- New Lease Upon Completion
- Great Location
- Allocated Parking

Surbiton Hill Park, Surbiton, KT5



Total area (approx.): 41.9 sq. m (451.0 sq. ft)