



## Etwell Place, KT5

£575,000

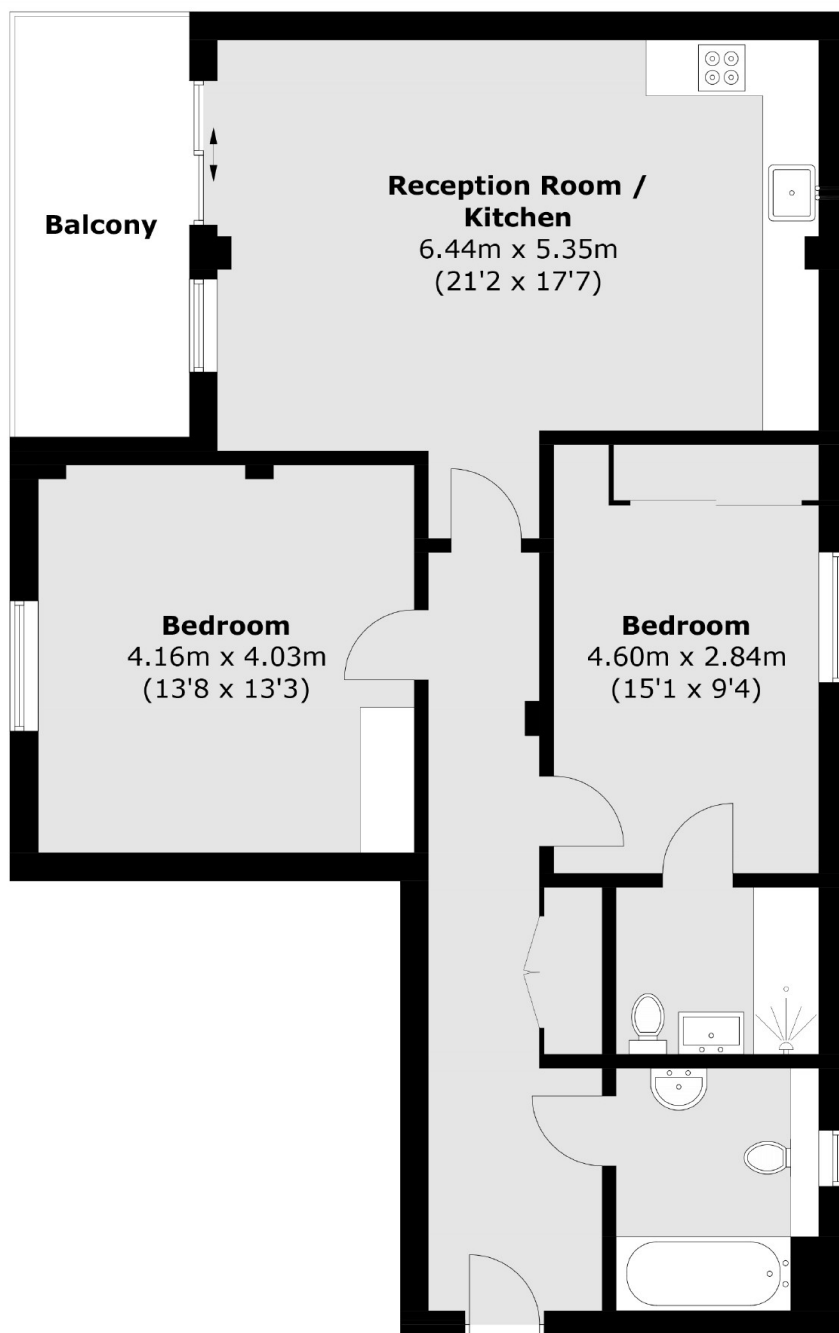
This larger than average first floor modern apartment is located in central Surbiton. It offers two double bedrooms, two bathrooms, an open plan kitchen/ reception room and a large private balcony. There are the added benefits of an allocated parking space and a lift service.

Etwell Place is a peaceful road around the corner from Ewell Road which offers a selection of bars, restaurants and local shops. The property is less than half a mile to Surbiton station, which has fast links to Waterloo as well as convenient access to the A3.

### Features

First Floor  
Two Double Bedrooms  
Modern Interior  
Allocated Parking  
Private Balcony  
Central Location

# Etwell Place, Surbiton, KT5



## First Floor

Total area (approx.): 85.0 sq. m (914.9 sq. ft)

Balcony (approx.): 8.4 sq. m (90.4 sq. ft)

**Dexters**

Surbiton  
2 Claremont Road  
Surbiton  
KT6 4QU

Sales  
020 8390 3939

Energy Rating: B. We aim to make our particulars both accurate and reliable. However they are not guaranteed; nor do they form part of an offer or contract. If you require clarification on any points then please contact us, especially if you're traveling some distance to view. Please note that appliances and heating systems have not been tested and therefore no warranties can be given as to their good working order.

 **RICS** | Regulated  
Estate Agent  
and Letting Agent

[dexters.co.uk](http://dexters.co.uk)