



**Redwood Walk, KT6**

**£1,199,950**

**Dexters**



## Redwood Walk, KT6

A wonderful, chalet style, three double bedroom, two bathroom, link-detached house located within the Southborough conservation area. Beautifully presented throughout and situated on a private road, this house offers nearly 1800sqft of accommodation.

On the ground floor there is a fitted kitchen, a downstairs WC, a double length reception room, plus a separate dining area and a conservatory. There is a generous double bedroom with an immaculate en suite and a large garage which could be converted subject to planning permission. Upstairs there are two further double bedrooms with air conditioning and a family bathroom. Externally there is a beautiful rear garden with patio and covered terrace to the rear, and two off street parking spaces to the front.

Redwood Walk is located in a peaceful part of Surbiton. The town centre with shops, restaurants, bars and amenities and is within a mile, as is Surbiton mainline station offering a fast service to London Waterloo in 17 minutes. Some of the areas best schools are also nearby.

### Features

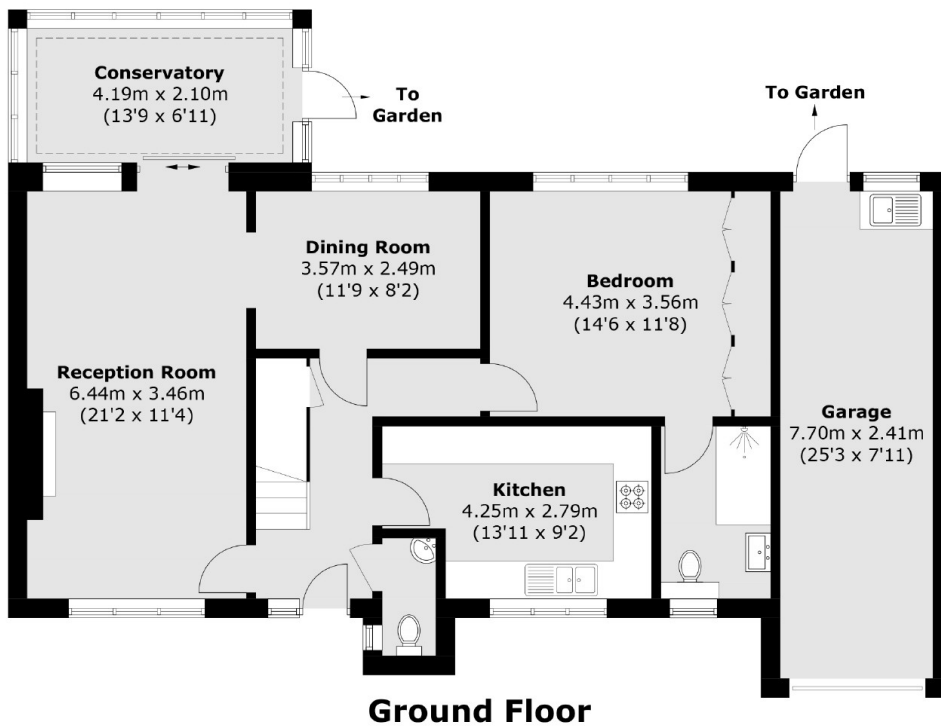
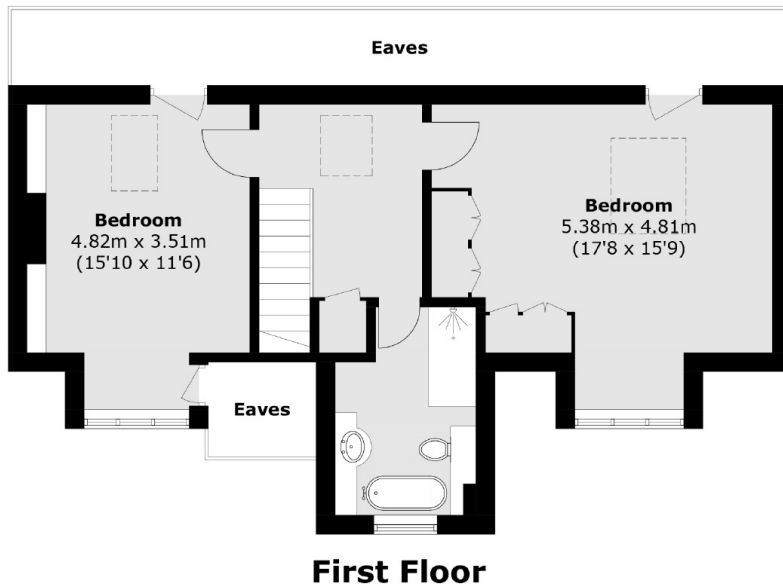
- Southborough Estate
- Private Road
- Link Detached
- Three Double Bedrooms
- Off Street Parking
- Quiet Location







# Redwood Walk, Surbiton, KT6



Total area (approx.): 142.5 sq. m (1,533.9 sq. ft)  
Garage: 18.7 sq. m (201.3 sq. ft)  
(Excluding Eaves)